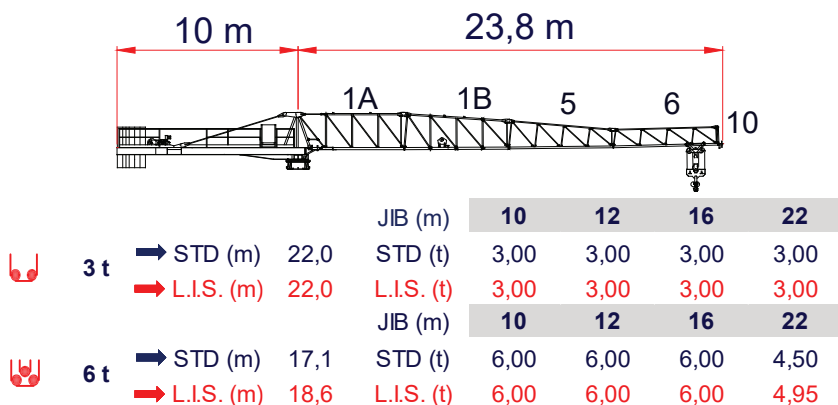
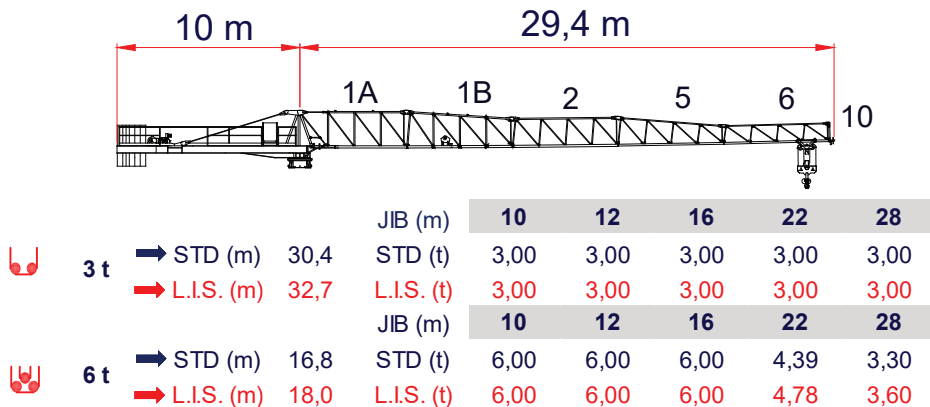
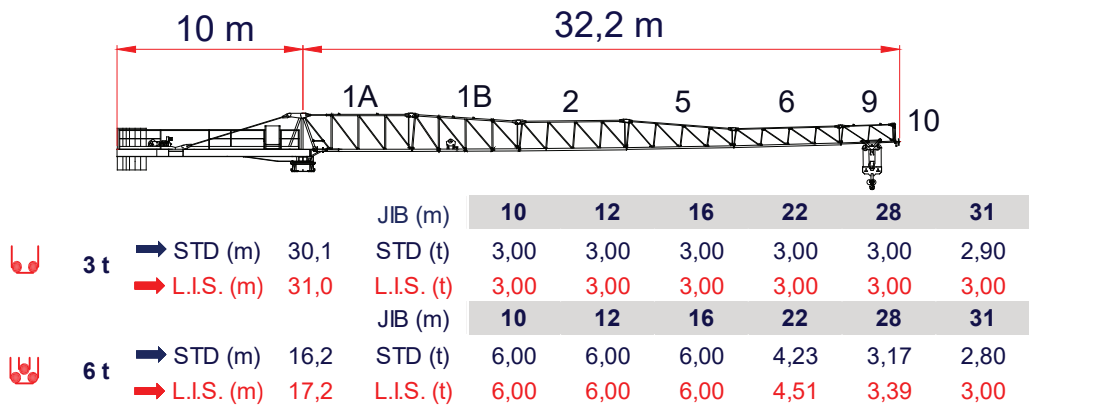
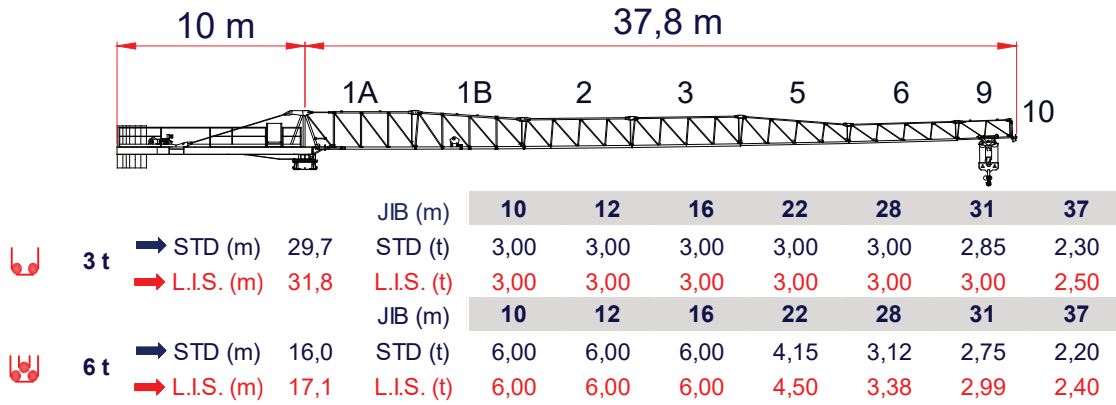
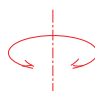
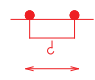

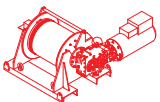






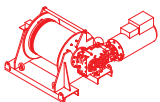




L.I.S. = Load Increase System
 All intermediate loads can be increased till a maximum of 10% if the crane is equipped with L.I.S.
 Con il sistema L.I.S. tutte le portate intermedie possono essere aumentate fino ad un massimo del 10%

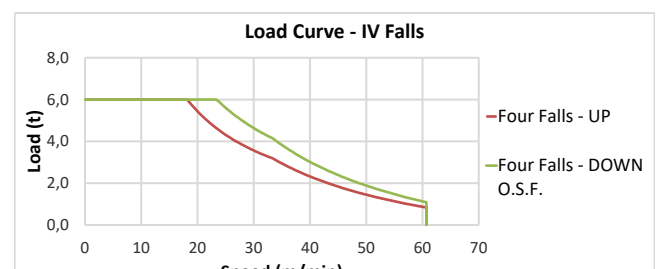
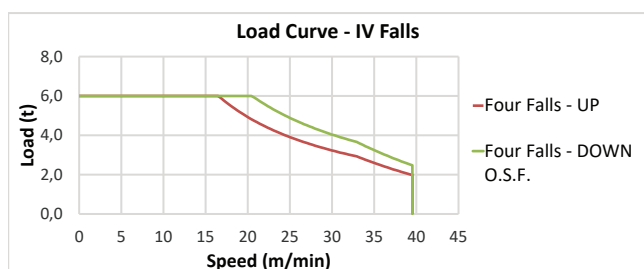
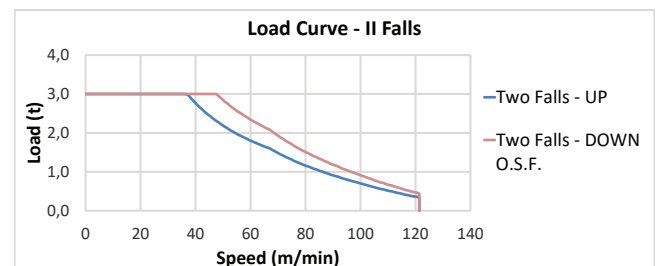
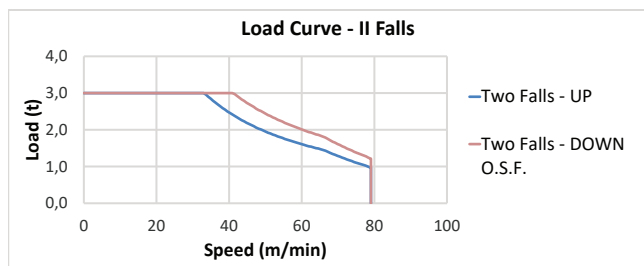


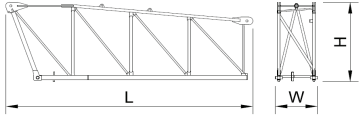
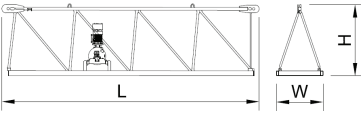
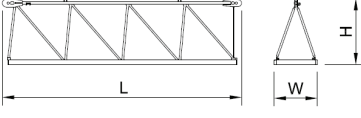


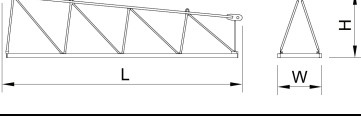


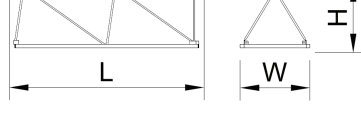
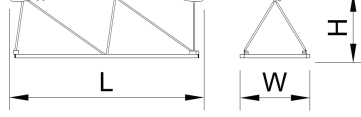
L.I.S. = Load Increase System
 All intermediate loads can be increased till a maximum of 10% if the crane is equipped with L.I.S.
 Con il sistema L.I.S. tutte le portate intermedie possono essere aumentate fino ad un massimo del 10%


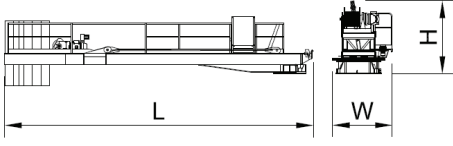
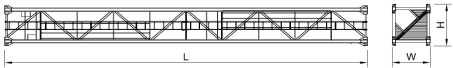
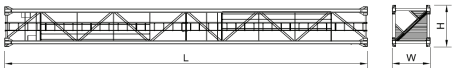
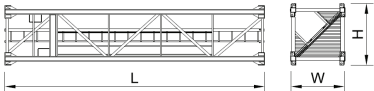
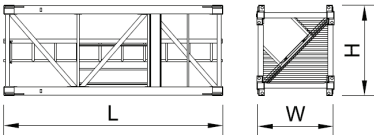
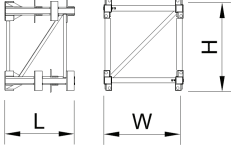
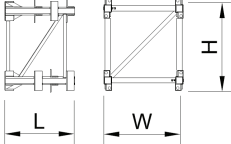
		Speed - Velocità	Power - Potenza
Rotazione Slewing		0 → 0,70 r.p.m.	1 x 65 Nm
Trolley Carrello		0 → 83,0 m/min	3,0 kW
Rail Traslazione		ON REQUEST - SU RICHIESTA	

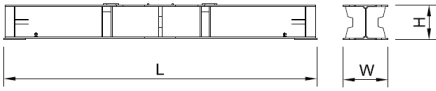
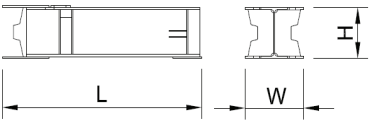
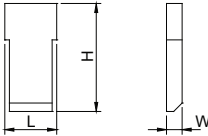
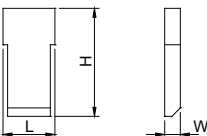
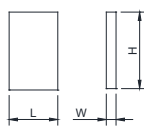
Type Tipo 	Power - Potenza		Rope - Fune
	hp	kW	m
HW0618344	26	18,5	340
Layer - Strati	N. 6		
Stepless - Reg. Continua 			
kg	m/min		
3000	0 → 41		
1213	0 → 79,1		
Stepless - Reg. Continua 			
6000	0 → 20		
2475	0 → 40		
Maximum height - Massima altezza -	 170 m	 85 m	
Total installed power Forza motrice totale	18,5 kW (26 hp) 32 kVA - 400/480 V - 50/60 Hz ± 5% ± 2%		

Type Tipo 	Power - Potenza		Rope - Fune
	hp	kW	m
HW0622600	30	22	600
Layer - Strati	N. 6		
Stepless - Reg. Continua 			
kg	m/min		
3000	0 → 47		
422	0 → 121		
Stepless - Reg. Continua 			
6000	0 → 23		
1092	0 → 61		
Maximum height - Massima altezza -	 300 m	 150 m	
Total installed power Forza motrice totale	22 kW (30 hp) 37 kVA - 400/480 V - 50/60 Hz ± 5% ± 2%		



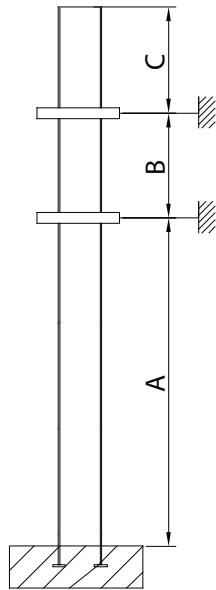
Q.ty Q.tà	Description Descrizione	Sketch Figura	Length Lunghezza [L]	Width Larghezza [W]	Height Altezza [H]	Single Weight Peso Unitario
Jib / Braccio			[m]	[m]	[m]	[t]
1	Jib section Elemento braccio 1A		6,17	1,10	2,13	0,96
1	Jib section Elemento braccio 1B		6,10	1,10	1,70	0,83
1	Jib section Elemento braccio 2		6,07	1,10	1,70	0,61
1	Jib section Elemento braccio 3		6,07	1,10	1,70	0,51
1	Jib section Elemento braccio 4		6,01	1,10	1,70	0,45
1	Jib section Elemento braccio 5		6,01	1,10	1,70	0,40
1	Jib section Elemento braccio 6		5,98	1,10	1,10	0,37
1	Jib section Elemento braccio 7		5,98	1,10	1,10	0,30
1	Jib section Elemento braccio 8		3,07	1,10	1,10	0,13
1	Jib section Elemento braccio 9		3,07	1,10	1,10	0,12

Q.ty Q.tà	Description Descrizione	Sketch Figura	Length Lunghezza [L]	Width Larghezza [W]	Height Altezza [H]	Single Weight Peso Unitario
Jib / Braccio			[m]	[m]	[m]	[t]
1	Tip element Elemento punta		6,17	1,10	1	0,12
Counter-jib / Controfreccia			[m]	[m]	[m]	[t]
1	Counterjib, Turntable, Hoisting winch, Controfreccia, Girevole, Argano di sollevamento		11,97	2,40	2,45	5,80
Tower / Torre			[m]	[m]	[m]	[t]
1	Tower section Elemento torre 120SB.1180		11,80	1,20	1,38	3,10
1	Tower section Elemento torre 120.1180		11,80	1,20	1,38	2,60
1	Tower section Elemento torre 120.0590		5,90	1,20	1,38	1,61
1	Tower section Elemento torre 120.0295		2,95	1,20	1,38	0,82
1	Expandable foundation/ Tronchetto di fondazione		1,09	1,20	1,38	0,49
1	Expandable foundation Element/ Tronchetto di Fondazione BOOSTER		1,09	1,38	1,38	0,75

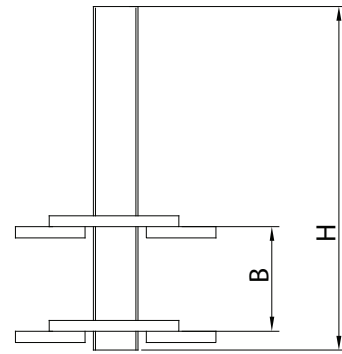
Q.ty Q.tà	Description Descrizione	Sketch Figura	Length Lunghezza [L]	Width Larghezza [W]	Height Altezza [H]	Single Weight Peso Unitario
Counter-jib Ballast / Zavorra di controfreccia			[m]	[m]	[m]	[t]
1	Base main beam Trave lunga base		5,72	0,67	0,65	1,56
2	Half base beam Trave corta base		2,77	0,45	0,67	0,75
Counter-jib Ballast / Zavorra di controfreccia			[m]	[m]	[m]	[t]
4	Counter-jib Ballast Zavorra di controfreccia A2204		1,25	0,30	2,87	2,20
2	Counter-jib Ballast Zavorra di controfreccia B1322		1,25	0,18	2,87	1,32
1	Counter-jib Ballast Zavorra di controfreccia C590		0,90	0,20	1,45	0,59

Different heights and tower combinations are available; please consult our technical dept.

Altezze diverse e combinazioni di torre sono disponibili; contattare il nostro ufficio tecnico.



EXTERNAL CLIMBING



INTERNAL CLIMBING

ENG CRANES SRL

Via Limido 1/E
42024 Castelnovo di Sotto - RE
Italy

Info + 39 0522 1495518

Fax + 39 0522 1495601

commerciale@engcranes.com

www.engcranes.com