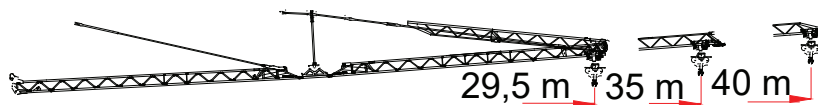
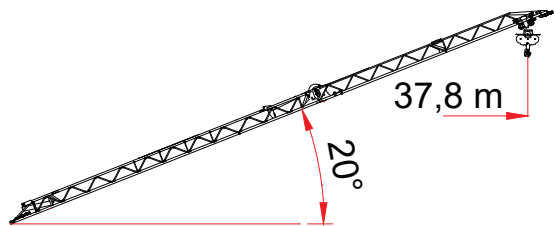


		JIB (m)	3	→	14
2 t	→	STD (t)	2,00		
	→	L.I.S. (t)	2,00		
2 t	→	JIB (m)	3	→	14
	→	STD (t)	2,00		
→	L.I.S. (t)	2,00			
4 t	→	JIB (m)	3	→	14
	→	STD (t)	4,00		
→	L.I.S. (t)	4,00			



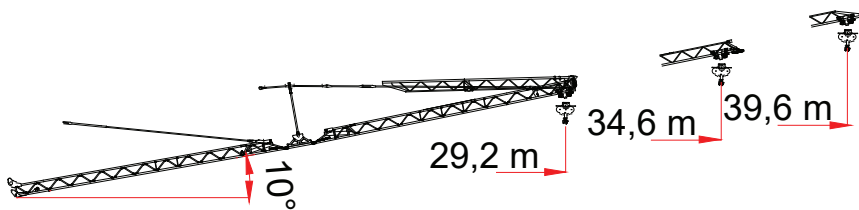
		JIB (m)	12	18	25	29,5	35	40
2 t	→	STD (m)	24,5	23,1	23,1	23,1	23,1	23,1
	→	L.I.S. (m)	26,2	24,8	24,8	24,8	24,8	24,8
2 t	→	JIB (m)	12	18	25	29,5	35	40
	→	STD (t)	2,00	2,00	1,82	1,48	1,19	1,00
→	L.I.S. (t)	2,00	2,00	1,98	1,62	1,31	1,10	
4 t	→	JIB (m)	12	18	20	29,5	35	40
	→	STD (t)	4,00	2,73	1,82	1,48	1,19	1,00
→	L.I.S. (t)	4,00	2,96	1,98	1,62	1,31	1,10	



		JIB (m)	3	→	37,8
2 t	→	STD (t)	1,10		
	→	L.I.S. (t)	1,10		
2 t	→	JIB (m)	3	→	37,8
	→	STD (t)	1,00		
→	L.I.S. (t)	1,00			
4 t	→	JIB (m)	3	→	37,8
	→	STD (t)	1,00		
→	L.I.S. (t)	1,00			

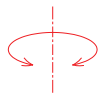
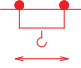
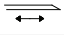

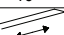
		JIB (m)	12	18	25	29,5	35
2 t	→	STD (m)	27,5	26,2	26,2	26,2	26,2
	→	L.I.S. (m)	29,8	27,7	27,7	27,7	27,7
2 t	→	JIB (m)	12	18	25	29,5	35
	→	STD (t)	2,00	2,00	2,00	1,73	1,40
→	L.I.S. (t)	2,00	2,00	2,00	1,85	1,50	
4 t	→	JIB (m)	12	18	20	29,5	35
	→	STD (t)	4,00	3,16	2,12	1,73	1,40
→	L.I.S. (t)	4,00	3,36	2,26	1,85	1,50	

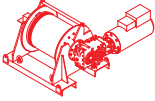




		JIB (m)	12	18	25	29,5
2 t	→	STD (m)	25,8	24,6	24,6	24,6
	→	L.I.S. (m)	27,6	26,5	26,5	26,5
2 t	→	JIB (m)	12	18	25	29,5
	→	STD (t)	2,00	2,00	1,96	1,60
→	L.I.S. (t)	2,00	2,00	2,00	1,75	
4 t	→	JIB (m)	12	18	20	29,5
	→	STD (t)	4,00	2,93	1,96	1,60
→	L.I.S. (t)	4,00	3,19	2,14	1,75	

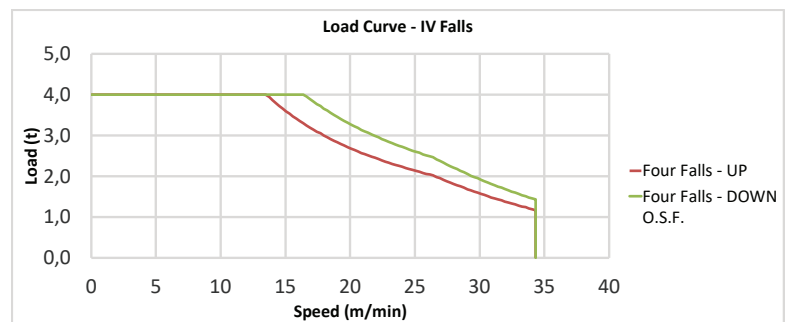
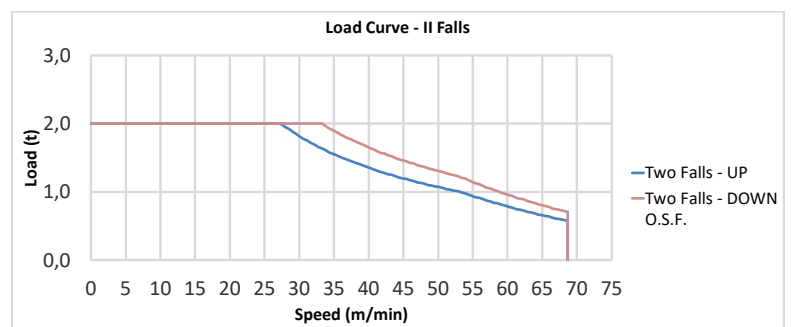


		JIB (m)	12	18	25	29,2	34,6	39,6
2 t	→	STD (m)	24,3	22,9	22,9	22,9	22,9	22,9
	→	L.I.S. (m)	26,0	24,6	24,6	24,6	24,6	24,6
2 t	→	JIB (m)	12	18	25	29,2	34,6	39,6
	→	STD (t)	2,00	2,00	1,80	1,48	1,19	1,00
→	L.I.S. (t)	2,00	2,00	1,96	1,62	1,31	1,10	
4 t	→	JIB (m)	12	18	20	29,2	34,6	39,6
	→	STD (t)	2,00	2,00	1,80	1,48	1,19	1,00
→	L.I.S. (t)	2,00	2,00	1,96	1,62	1,31	1,10	
		JIB (m)	12	18	25	29,2	34,6	
2 t	→	STD (m)	27,5	25,9	25,9	25,9	25,9	
	→	L.I.S. (m)	29,8	27,4	27,4	27,4	27,4	
2 t	→	JIB (m)	12	18	25	29,2	34,6	
	→	STD (t)	2,00	2,00	2,00	1,73	1,40	
→	L.I.S. (t)	2,00	2,00	2,00	1,85	1,50		
4 t	→	JIB (m)	12	18	20	29,2	34,6	
	→	STD (t)	2,00	2,00	2,00	1,73	1,40	
→	L.I.S. (t)	2,00	2,00	2,00	1,85	1,50		
		JIB (m)	12	18	25	29,2		
2 t	→	STD (m)	25,8	24,4	24,4	24,4		
	→	L.I.S. (m)	27,6	26,2	26,2	26,2		
2 t	→	JIB (m)	12	18	25	29,2		
	→	STD (t)	2,00	2,00	1,94	1,60		
→	L.I.S. (t)	2,00	2,00	2,00	1,75			
4 t	→	JIB (m)	12	18	20	29,2		
	→	STD (t)	2,00	2,00	1,94	1,60		
→	L.I.S. (t)	2,00	2,00	2,00	1,75			

L.I.S. = Load Increase System
 All intermediate loads can be increased till a maximum of 10% if the crane is equipped with L.I.S.
 Con il sistema L.I.S. tutte le portate intermedie possono essere aumentate fino ad un massimo del 10%

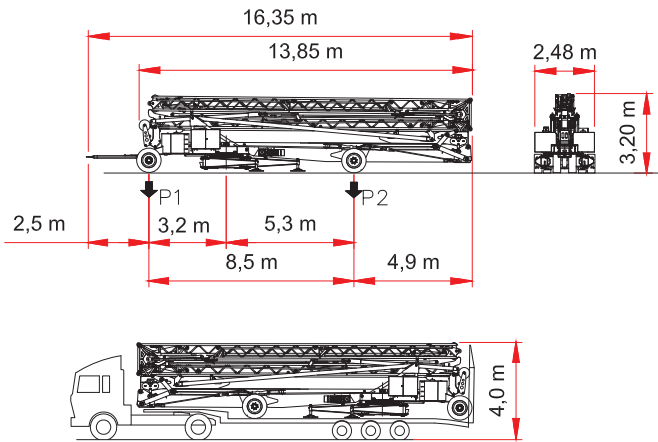
		Speed - Velocità	Power - Potenza
Slewing Rotazione		0 → 0,80 r.p.m.	4 kW
Trolley Carrello		 0 → 45 m/min	4 kW
		 0 → 45 m/min	
		 0 → 41 m/min	
Rail Traslazione	ON REQUEST - SU RICHIESTA		

Type Tipo	Power - Potenza		Rope - Fune
	hp - CV PS - ch	kW	m
 HW0411140	15	11	142
Layer - Strati	N. 4		
Stepless - Reg. Continua			
kg	m/min		
2000	0 → 33		
708	0 → 69		
Stepless - Reg. Continua			
4000	0 → 16		
1427	0 → 34		
Maximum height - Massima altezza -	 70 m		 35 m
Total installed power Forza motrice totale	11 kW (15 hp) 24 kVA - 400/480 V - 50/60 Hz ± 5% ± 2%		

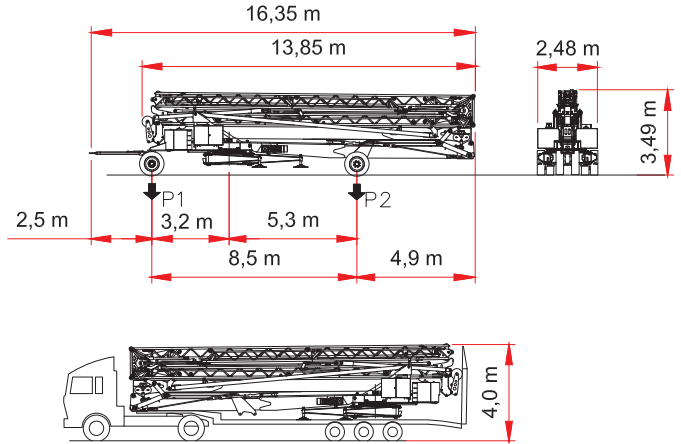


P1	kg 8500
P2	kg 15300
Ptot	kg 23800

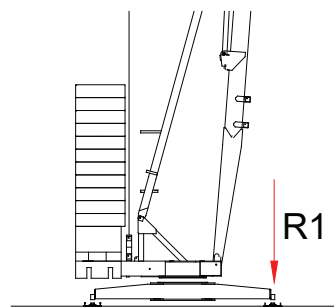
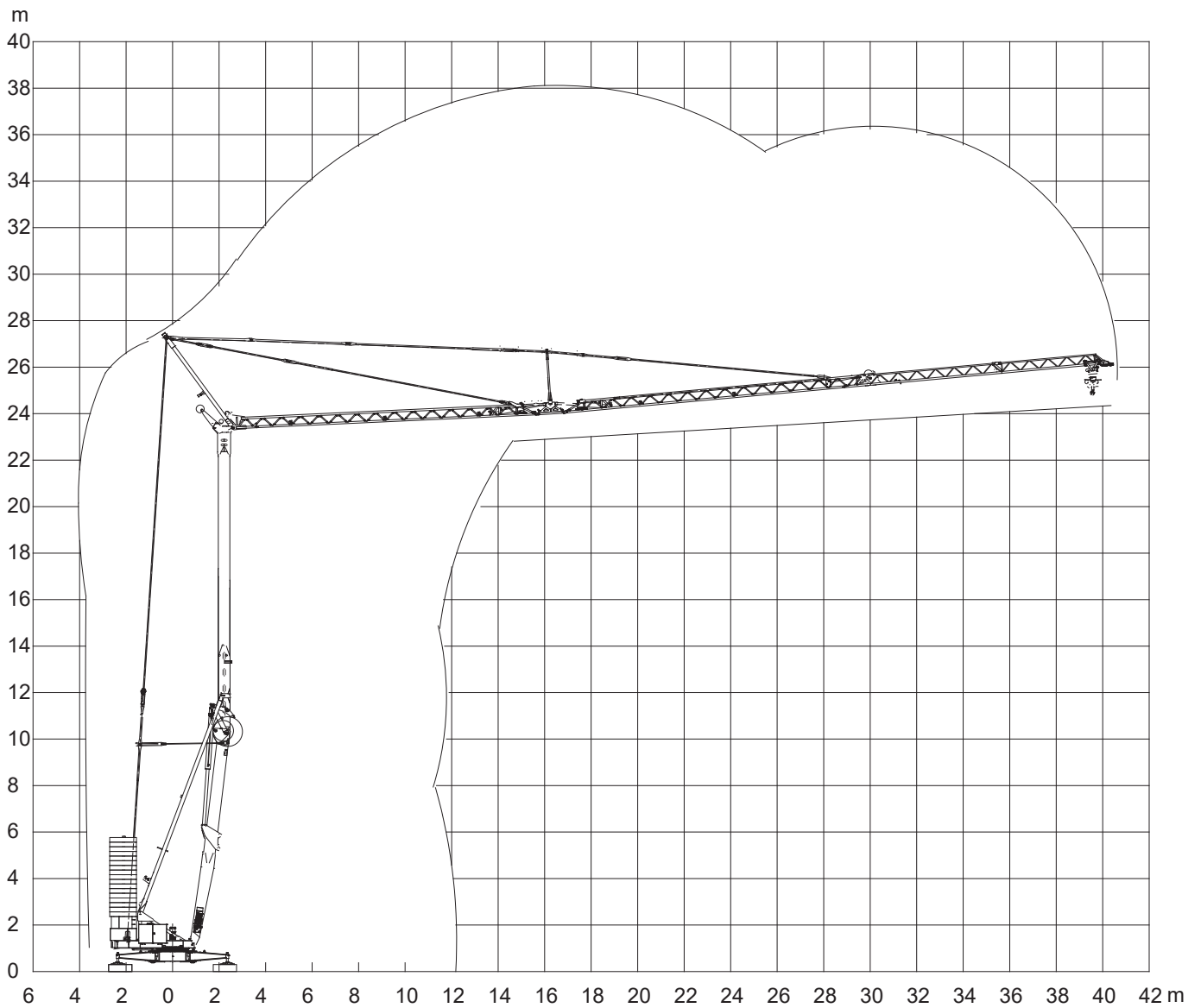
VARIABLE HEIGHT AXLE VERSION
VERSIONE ASSALE ALTEZZA VARIABILE



STANDARD VERSION
VERSIONE STANDARD



<p>STANDARD TRAILER 1X</p>		<p>17x1300kg + 2000kg zavorra ballast</p>
<p>RIBASSATO LOW-BED 1X</p>		<p>19000kg + 3600kg + 1300kg crane gru ballast zavorra axles zavorra assali</p>
<p>STANDARD TRAILER 2X</p>		<p>14500kg + 3600kg + 2000kg + 2x1300kg 1300kg crane gru ballast zavorra axles gru zavorra assali</p> <p>4400kg + 15x1300kg braccio zavorra jib ballast</p>
<p>CONTAINER 45' HIGH 2X</p>		<p>14500kg + 4x1300kg 1300kg crane zavorra axles gru ballast assali</p> <p>4400kg + 13x1300kg + 3600kg + 2000kg braccio zavorra jib ballast</p>



R1 ● 30 t ■ 22 t

▴ 19,0 t ○ 27,7 t

- Reazioni in servizio
- Reazioni fuori servizio
- ▴ Peso della gru senza assali
- Peso zavorra rotante

- Reactions in service
- Reactions out of service
- ▴ Dead weight without transport axles
- Ballast weight

ENG CRANES SRL

Via Limido 1/E
42024 Castelnovo di Sotto - RE
Italy

Info + 39 0522 1495518

Fax + 39 0522 1495601

commerciale@engcranes.com

www.engcranes.com