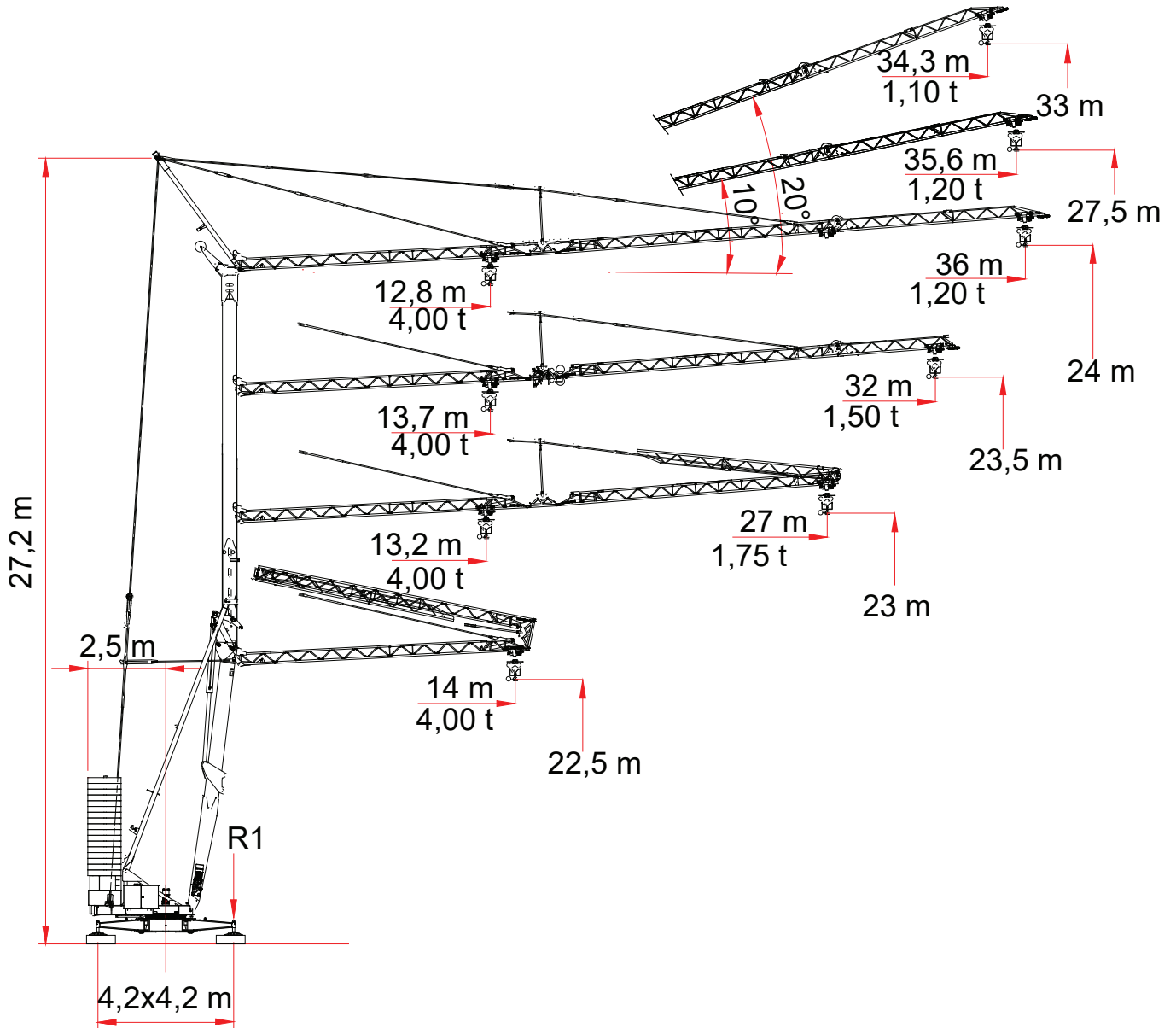
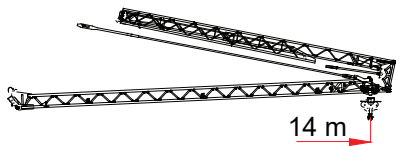


ESH 48

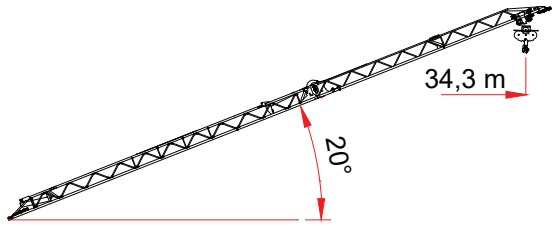




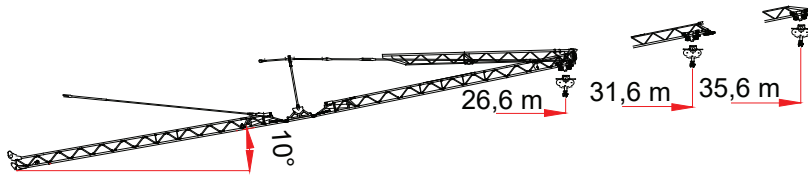
	JIB (m)	3	→	14
2 t	STD (t)	2,00		
	L.I.S. (t)	2,00		
2 t	JIB (m)	3	→	14
	STD (t)	2,00		
	L.I.S. (t)	2,00		
4 t	JIB (m)	3	→	14
	STD (t)	4,00		
	L.I.S. (t)	4,00		



2 t	→ STD (m)	22,1	JIB (m)	12	18	25	27	32	36
	→ L.I.S. (m)	23,7	L.I.S. (t)	2,00	2,00	1,87	1,71	1,39	1,20
2 t	→ STD (m)	20,9	JIB (m)	12	18	25	27	32	36
	→ L.I.S. (m)	22,4	STD (t)	2,00	2,00	1,60	1,45	1,17	1,00
4 t	→ STD (m)	12,0	L.I.S. (t)	2,00	2,00	1,75	1,59	1,28	1,10
	→ L.I.S. (m)	12,8	JIB (m)	12	18	20	27	32	36
2 t	→ STD (m)	23,8	STD (t)	4,00	2,41	1,60	1,45	1,17	1,00
	→ L.I.S. (m)	25,2	L.I.S. (t)	4,00	2,62	1,75	1,59	1,28	1,10
2 t	→ STD (m)	22,7	JIB (m)	12	18	25	27	32	
	→ L.I.S. (m)	24,0	STD (t)	2,00	2,00	1,89	1,72	1,40	
4 t	→ STD (m)	13,0	L.I.S. (t)	2,00	2,00	2,00	1,84	1,50	
	→ L.I.S. (m)	13,7	JIB (m)	12	18	25	27	32	
2 t	→ STD (m)	22,5	STD (t)	2,00	2,00	1,77	1,61	1,30	
	→ L.I.S. (m)	24,2	L.I.S. (t)	2,00	2,00	1,90	1,73	1,40	
2 t	→ STD (m)	21,5	JIB (m)	12	18	20	27	32	
	→ L.I.S. (m)	23,1	STD (t)	4,00	2,66	1,77	1,61	1,30	
4 t	→ STD (m)	12,3	L.I.S. (t)	4,00	2,85	1,90	1,73	1,40	
	→ L.I.S. (m)	13,2	JIB (m)	12	18	25	27		
2 t	→ STD (m)	22,5	STD (t)	2,00	2,00	1,76	1,60		
	→ L.I.S. (m)	24,2	L.I.S. (t)	2,00	2,00	1,92	1,75		
2 t	→ STD (m)	21,5	JIB (m)	12	18	25	27		
	→ L.I.S. (m)	23,1	STD (t)	2,00	2,00	1,65	1,50		
4 t	→ STD (m)	12,3	L.I.S. (t)	2,00	2,00	1,82	1,65		
	→ L.I.S. (m)	13,2	JIB (m)	12	18	20	27		
2 t	→ STD (m)	22,5	STD (t)	4,00	2,49	1,65	1,50		
	→ L.I.S. (m)	24,2	L.I.S. (t)	4,00	2,72	1,82	1,65		




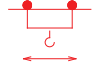
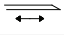

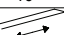
2 t	JIB (m)	3	→	34,3
	STD (t)	1,10		
	L.I.S. (t)	1,10		
2 t	JIB (m)	3	→	34,3
	STD (t)	1,00		
	L.I.S. (t)	1,00		
4 t	JIB (m)	3	→	34,3
	STD (t)	1,00		
	L.I.S. (t)	1,00		

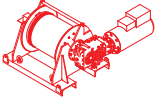






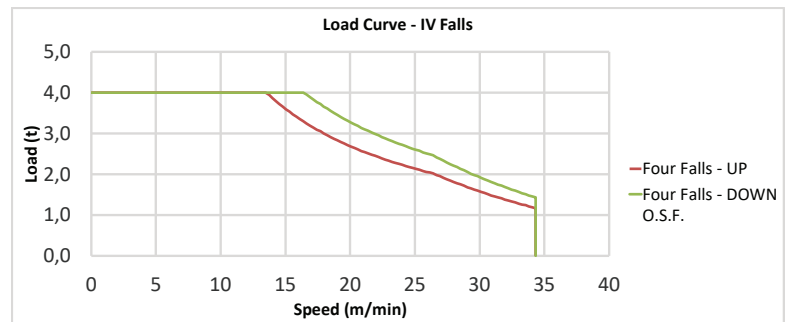
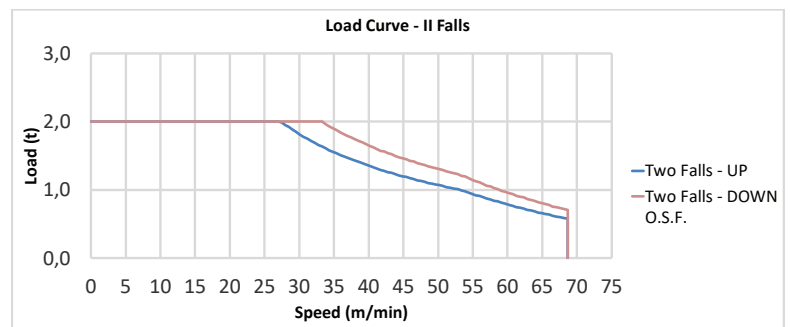
2 t	→ STD (m)	22,2	JIB (m)	12	18	25	26,6	31,6	35,6
	→ L.I.S. (m)	23,7	L.I.S. (t)	2,00	2,00	1,72	1,60	1,28	1,10
2 t	→ STD (m)	20,4	JIB (m)	12	18	25	26,6	31,6	35,6
	→ L.I.S. (m)	21,9	STD (t)	2,00	2,00	1,56	1,44	1,16	1,00
4 t	→ STD (m)	20,4	L.I.S. (t)	2,00	2,00	1,70	1,58	1,28	1,10
	→ L.I.S. (m)	21,9	JIB (m)	12	18	20	26,6	31,6	35,6
2 t	→ STD (m)	23,8	STD (t)	2,00	2,00	1,56	1,44	1,16	1,00
	→ L.I.S. (m)	25,2	L.I.S. (t)	2,00	2,00	1,70	1,58	1,28	1,10
2 t	→ STD (m)	22,2	JIB (m)	12	18	25	26,6	31,6	
	→ L.I.S. (m)	23,5	STD (t)	2,00	2,00	1,73	1,61	1,30	
4 t	→ STD (m)	22,2	L.I.S. (t)	2,00	2,00	1,86	1,73	1,40	
	→ L.I.S. (m)	23,5	JIB (m)	12	18	20	26,6	31,6	
2 t	→ STD (m)	22,5	STD (t)	2,00	2,00	1,73	1,60		
	→ L.I.S. (m)	24,2	L.I.S. (t)	2,00	2,00	1,89	1,75		
2 t	→ STD (m)	21,0	JIB (m)	12	18	25	26,6		
	→ L.I.S. (m)	22,7	STD (t)	2,00	2,00	1,62	1,50		
4 t	→ STD (m)	21,0	L.I.S. (t)	2,00	2,00	1,78	1,65		
	→ L.I.S. (m)	22,7	JIB (m)	12	18	20	26,6		
2 t	→ STD (m)	22,5	STD (t)	2,00	2,00	1,62	1,50		
	→ L.I.S. (m)	24,2	L.I.S. (t)	2,00	2,00	1,78	1,65		

L.I.S. = Load Increase System

All intermediate loads can be increased till a maximum of 10% if the crane is equipped with L.I.S.
 Con il sistema L.I.S. tutte le portate intermedie possono essere aumentate fino ad un massimo del 10%

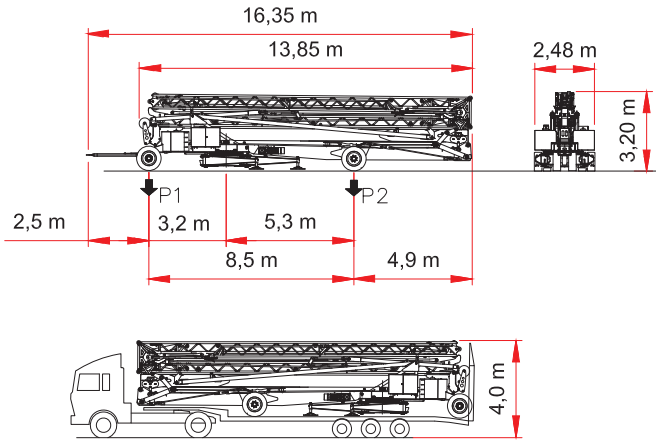
		Speed - Velocità	Power - Potenza
Slewing Rotazione		0 → 0,80 r.p.m.	4 kW
Trolley Carrello		 0 → 45 m/min	4 kW
		 0 → 45 m/min	
		 0 → 41 m/min	
Rail Traslazione	ON REQUEST - SU RICHIESTA		

Type Tipo	Power - Potenza		Rope - Fune
	hp - CV PS - ch	kW	m
 HW0411140	15	11	142
Layer - Strati	N. 4		
Stepless - Reg. Continua			
kg	m/min		
2000	0 → 33		
708	0 → 69		
Stepless - Reg. Continua			
4000	0 → 16		
1427	0 → 34		
Maximum height - Massima altezza -	 70 m		 35 m
Total installed power Forza motrice totale	11 kW (15 hp) 24 kVA - 400/480 V - 50/60 Hz ± 5% ± 2%		

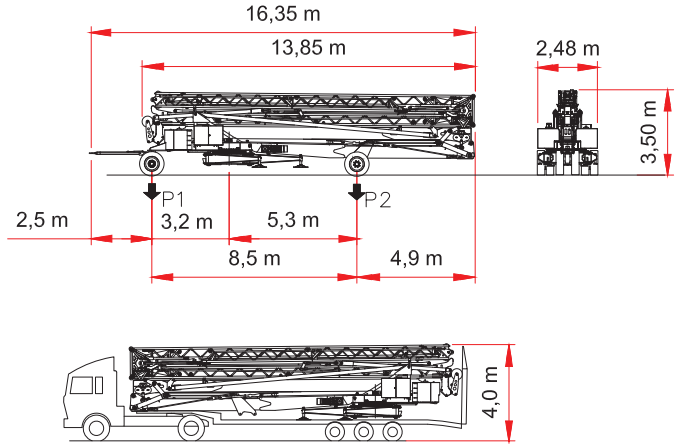


P1	kg 8500
P2	kg 14300
Ptot	kg 22800

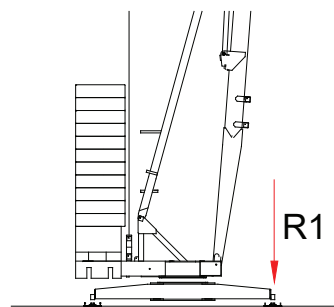
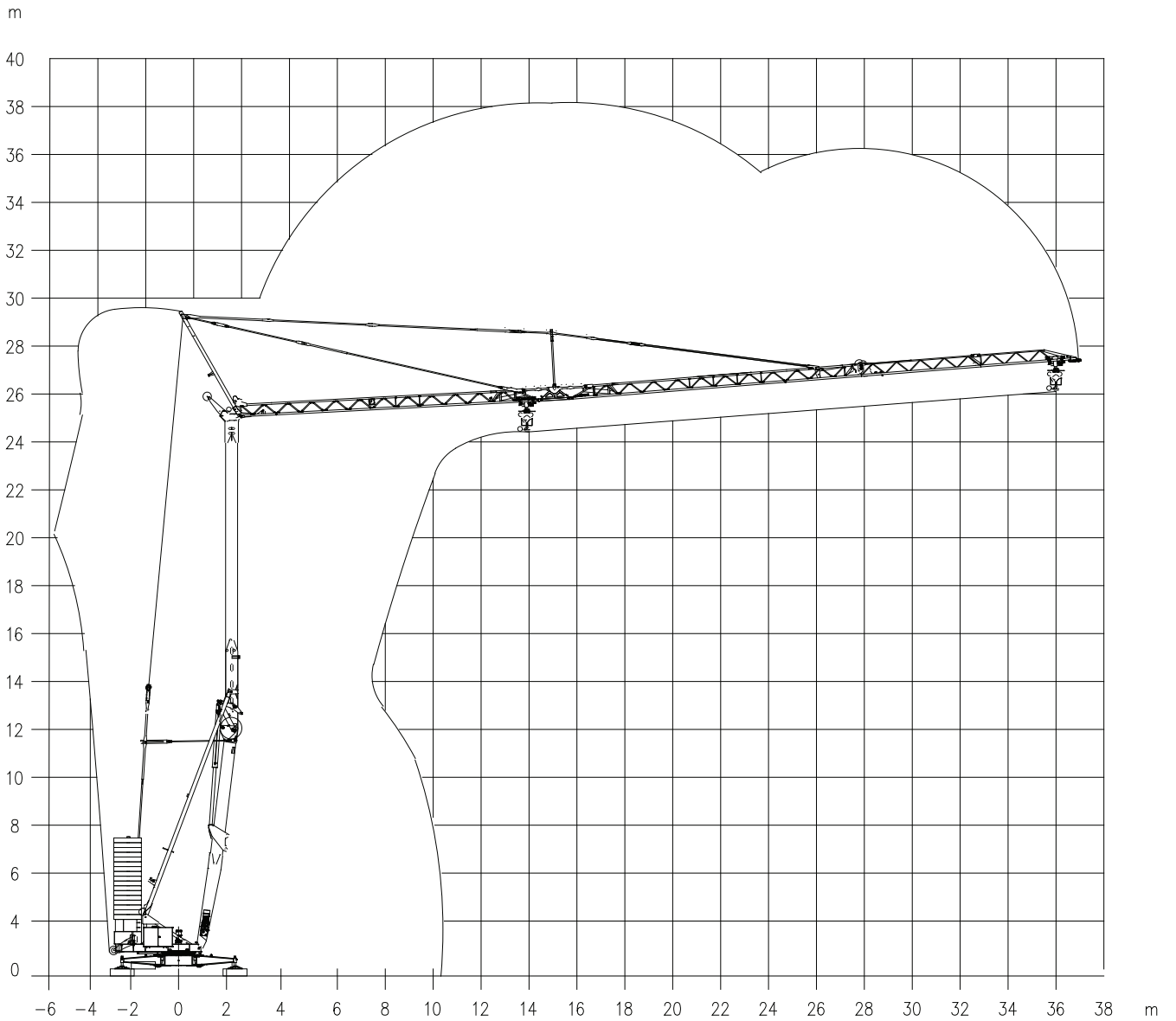
VARIABLE HEIGHT AXLE VERSION
VERSIONE ASSALE ALTEZZA VARIABILE



STANDARD VERSION
VERSIONE STANDARD



<p>STANDARD TRAILER 1X</p>		<p>15x1300kg + 2000kg zavorra ballast</p>
<p>RIBASSATO LOW-BED 1X</p>		<p>18000kg + 3600kg + 1300kg crane gru ballast zavorra axles assali</p>
<p>STANDARD TRAILER 2X</p>		<p>13900kg + 3600kg + 2000kg 1300kg crane gru ballast zavorra axles assali</p> <p>4000kg + 15x1300kg braccio zavorra jib ballast</p>
<p>CONTAINER 45' HIGH 2X</p>		<p>13900kg + 2x1300kg 1300kg crane zavorra ballast axles gru ballast assali</p> <p>4000kg + 13x1300kg + 3600kg + 2000kg braccio zavorra jib ballast</p>



R1 ● 28 t ■ 19 t

▴ 18 t ○ 25,1 t

- Reazioni in servizio
- Reazioni fuori servizio
- ▴ Peso della gru senza assali
- Peso zavorra rotante

- Reactions in service
- Reactions out of service
- ▴ Dead weight without transport axles
- Ballast weight

ENG CRANES SRL

Via Limido 1/E
42024 Castelnovo di Sotto - RE
Italy

Info + 39 0522 1495518

Fax + 39 0522 1495601

commerciale@engcranes.com

www.engcranes.com