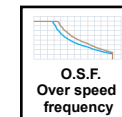
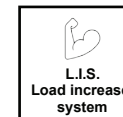
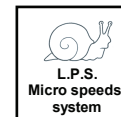
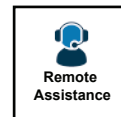
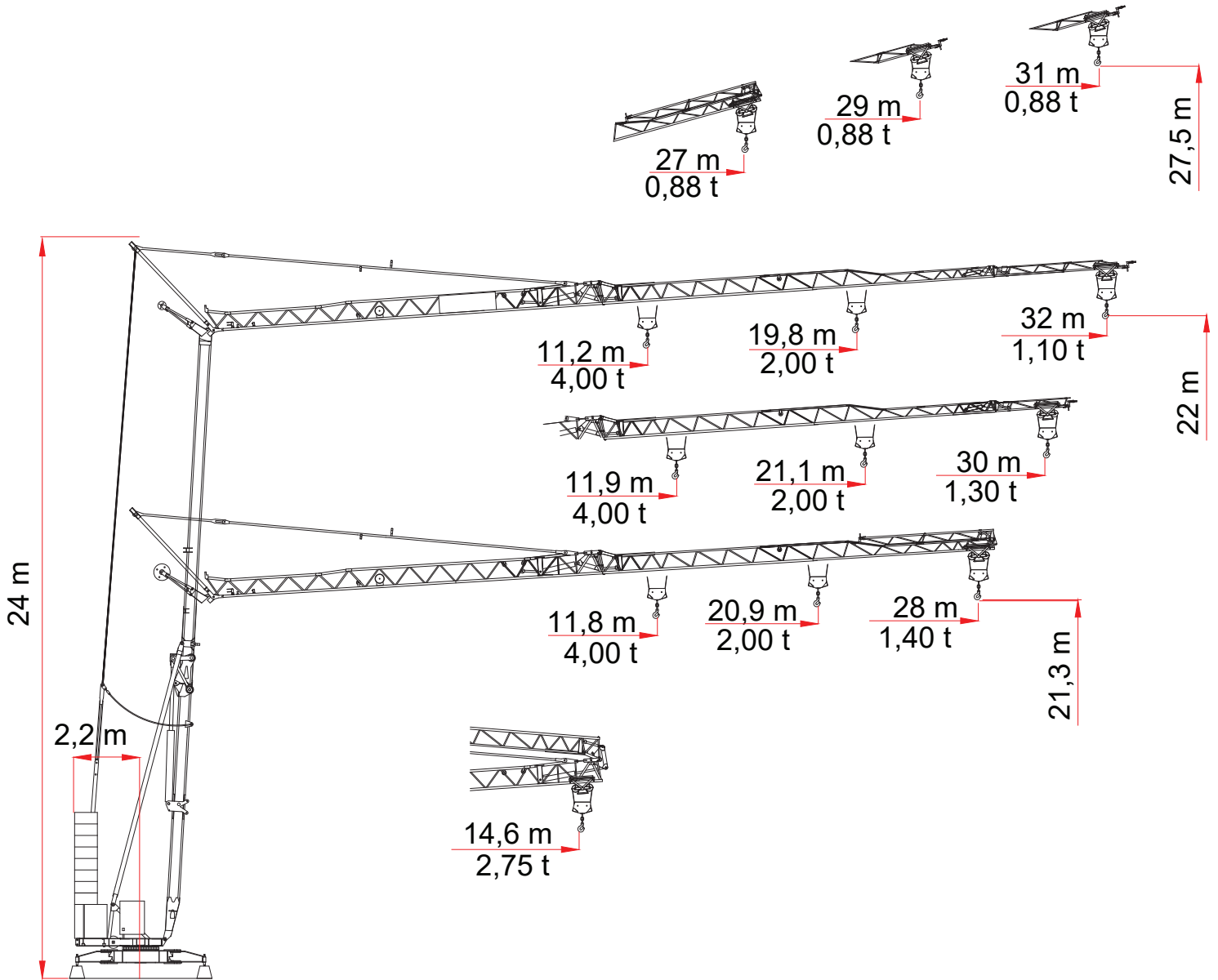
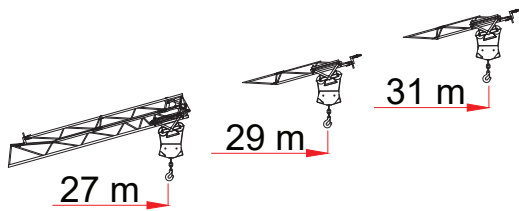
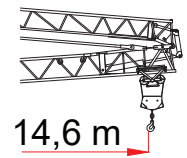


ESH 45

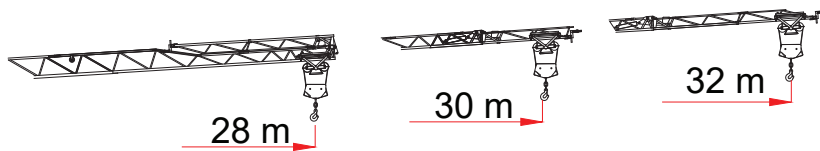




| | | JIB (m) | 27 | 29 | 31 |
|-------|------------|---------|------|------|------|
| 2/4 t | STD (t) | | 0,80 | 0,80 | 0,80 |
| | L.I.S. (t) | | 0,88 | 0,88 | 0,88 |
| | | JIB (m) | 27 | 29 | |
| 2/4 t | STD (t) | | 0,80 | 0,80 | |
| | L.I.S. (t) | | 0,88 | 0,88 | |
| | | JIB (m) | 27 | | |
| 2/4 t | STD (t) | | 0,80 | | |
| | L.I.S. (t) | | 0,88 | | |



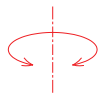
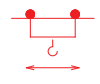
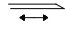
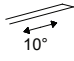
| | | JIB (m) | 3 | 14,6 |
|-----|------------|---------|------|------|
| 2 t | STD (t) | | 2,00 | 2,00 |
| | L.I.S. (t) | | 2,00 | 2,00 |
| | | JIB (m) | 3 | 14,6 |
| 2 t | STD (t) | | 2,00 | 2,00 |
| | L.I.S. (t) | | 2,00 | 2,00 |
| | | JIB (m) | 3 | 14,6 |
| 4 t | STD (t) | | 2,50 | 2,50 |
| | L.I.S. (t) | | 2,75 | 2,75 |

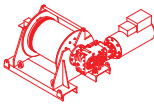






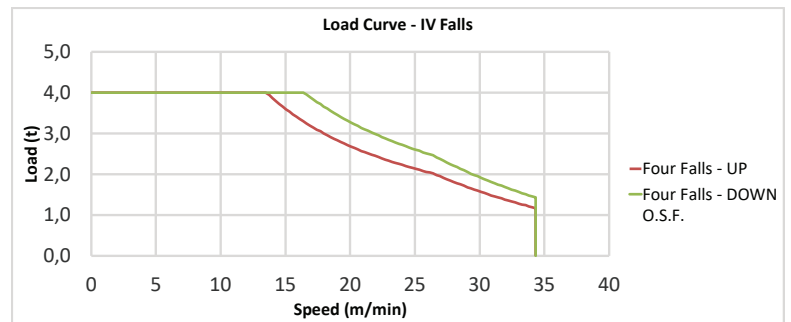
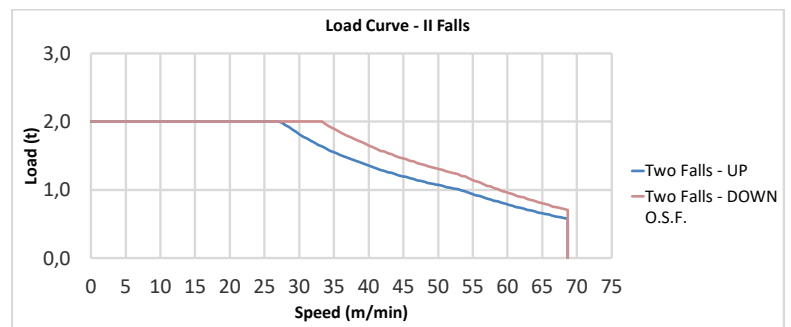
| | | JIB (m) | 18 | 20 | 22 | 24 | 28 | 30 | 32 |
|-----|------------|---------|------|------|------|------|------|------|------|
| 2 t | STD (m) | 18,4 | 2,00 | 1,80 | 1,60 | 1,44 | 1,19 | 1,09 | 1,00 |
| | L.I.S. (m) | 19,8 | 2,00 | 1,97 | 1,75 | 1,57 | 1,30 | 1,19 | 1,10 |
| | | JIB (m) | 18 | 20 | 22 | 24 | 28 | 30 | 32 |
| 2 t | STD (t) | 18,0 | 2,00 | 1,75 | 1,55 | 1,39 | 1,14 | 1,04 | 0,95 |
| | L.I.S. (t) | 19,4 | 2,00 | 1,92 | 1,70 | 1,52 | 1,25 | 1,14 | 1,05 |
| | | JIB (m) | 18 | 20 | 22 | 24 | 28 | 30 | 32 |
| 4 t | STD (t) | 10,5 | 2,00 | 1,75 | 1,55 | 1,39 | 1,14 | 1,04 | 0,95 |
| | L.I.S. (t) | 11,2 | 2,19 | 1,92 | 1,70 | 1,52 | 1,25 | 1,14 | 1,05 |
| | | JIB (m) | 18 | 20 | 22 | 24 | 28 | 30 | |
| 2 t | STD (m) | 19,8 | 2,00 | 1,98 | 1,76 | 1,58 | 1,31 | 1,20 | |
| | L.I.S. (m) | 21,1 | 2,00 | 2,00 | 1,90 | 1,71 | 1,42 | 1,30 | |
| | | JIB (m) | 18 | 20 | 22 | 24 | 28 | 30 | |
| 2 t | STD (m) | 19,4 | 2,00 | 1,93 | 1,71 | 1,53 | 1,26 | 1,15 | |
| | L.I.S. (m) | 20,7 | 2,00 | 2,00 | 1,85 | 1,66 | 1,37 | 1,25 | |
| | | JIB (m) | 18 | 20 | 22 | 24 | 28 | 30 | |
| 4 t | STD (m) | 11,2 | 2,20 | 1,93 | 1,71 | 1,53 | 1,26 | 1,15 | |
| | L.I.S. (m) | 11,9 | 2,38 | 2,09 | 1,85 | 1,66 | 1,37 | 1,25 | |
| | | JIB (m) | 18 | 20 | 22 | 24 | 28 | | |
| 2 t | STD (m) | 19,2 | 2,00 | 1,90 | 1,69 | 1,51 | 1,25 | | |
| | L.I.S. (m) | 20,9 | 2,00 | 2,00 | 1,88 | 1,69 | 1,40 | | |
| | | JIB (m) | 18 | 20 | 22 | 24 | 28 | | |
| 2 t | STD (m) | 18,8 | 2,00 | 1,85 | 1,64 | 1,46 | 1,20 | | |
| | L.I.S. (m) | 20,5 | 2,00 | 2,00 | 1,83 | 1,64 | 1,35 | | |
| | | JIB (m) | 18 | 20 | 22 | 24 | 28 | | |
| 4 t | STD (m) | 10,9 | 2,11 | 1,85 | 1,64 | 1,46 | 1,20 | | |
| | L.I.S. (m) | 11,8 | 2,35 | 2,06 | 1,83 | 1,64 | 1,35 | | |

L.I.S. = Load Increase System

All intermediate loads can be increased till a maximum of 10% if the crane is equipped with L.I.S.
 Con il sistema L.I.S. tutte le portate intermedie possono essere aumentate fino ad un massimo del 10%

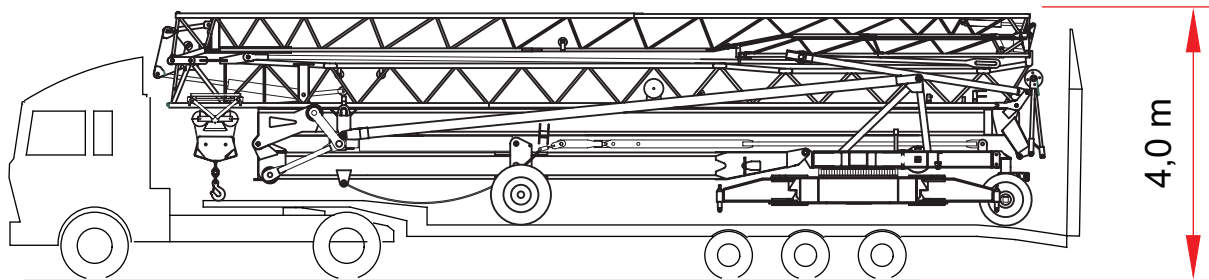
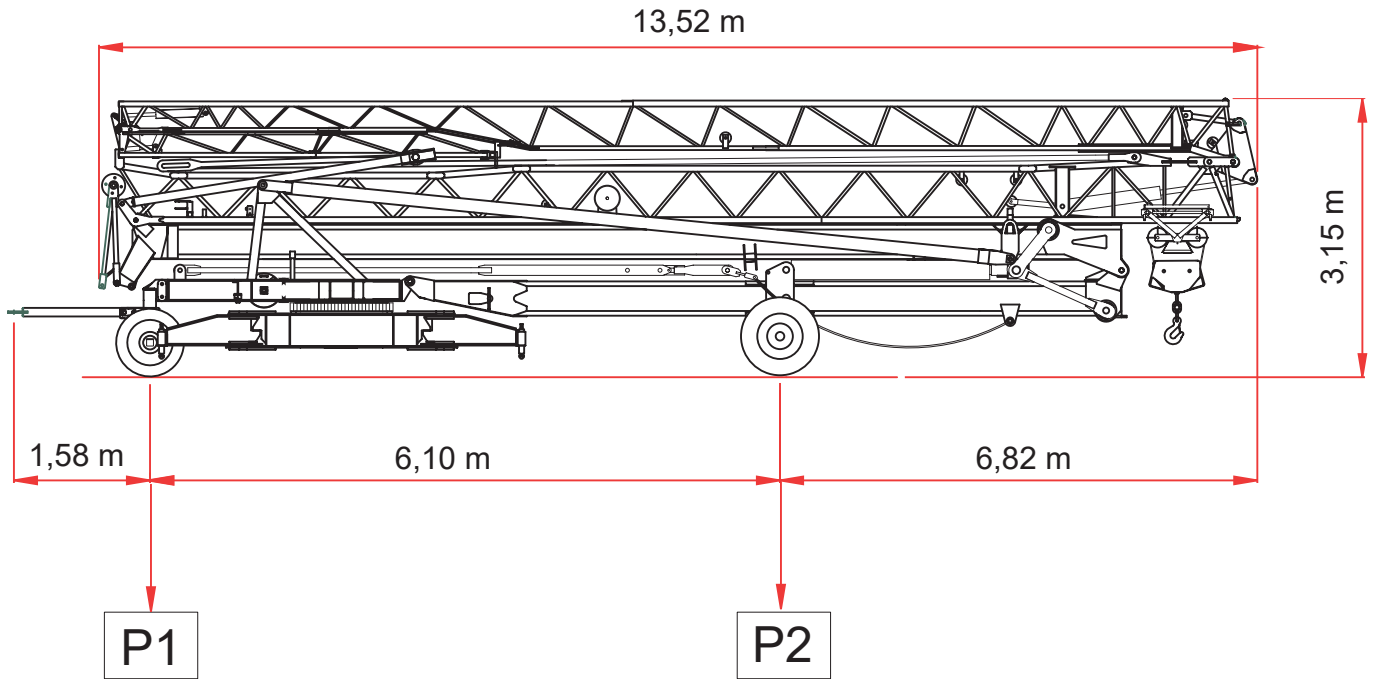
| | | Speed - Velocità | Power - Potenza |
|----------------------|---|--|-----------------|
| Slewing Rotazione |  | 0 → 0,80 r.p.m. | 3,0 kW |
| Trolley Carrello |  |  0 → 45 m/min | 4,0 kW |
| | |  0 → 45 m/min | |
| Rail Traslazione | ON REQUEST - SU RICHIESTA | | |

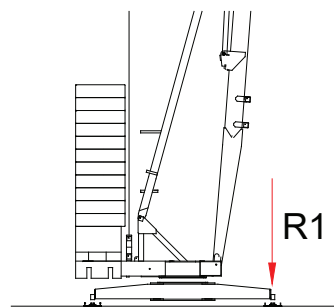
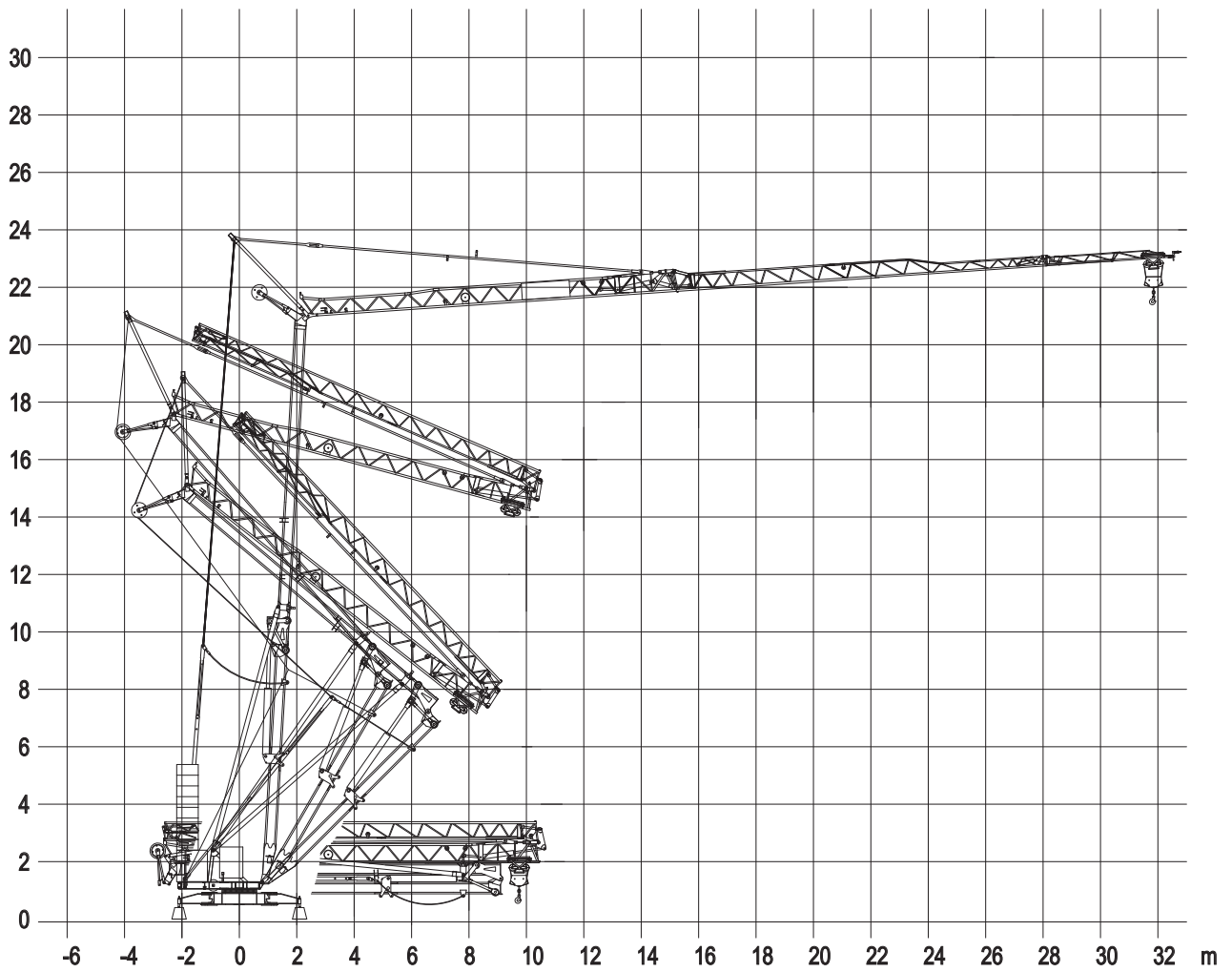
| Type Tipo | Power - Potenza | | Rope - Fune |
|--|--|--|-------------|
| | hp - CV PS - ch | kW | m |
|  HW0411140 | 15 | 11 | 142 |
| Layer - Strati | N. 4 | | |
| Stepless - Reg. Continua | |  | |
| kg | m/min | | |
| 2000 | 0 → 33 | | |
| 708 | 0 → 69 | | |
| Stepless - Reg. Continua | |  | |
| 4000 | 0 → 16 | | |
| 1427 | 0 → 34 | | |
| Maximum height - Massima altezza - |  70 m |  35 m | |
| Total installed power Forza motrice totale | 11 kW (15 hp) 24 kVA - 400/480 V - 50/60 Hz ± 5% ± 2% | | |



| | |
|------|----------|
| P1 | kg 7600 |
| P2 | kg 8800 |
| Ptot | kg 16400 |

STANDARD VERSION
VERSIONE STANDARD





R1 ● 20,4 t ■ 18,5 t

▲ 10,4 t ○ 21,2 t

- Reazioni in servizio
- Reazioni fuori servizio
- ▲ Peso della gru senza assali
- Peso zavorra rotante

- Reactions in service
- Reactions out of service
- ▲ Dead weight without transport axles
- Ballast weight

ENG CRANES SRL

Via Limido 1/E
42024 Castelnovo di Sotto - RE
Italy

Info + 39 0522 1495518

Fax + 39 0522 1495601

commerciale@engcranes.com

www.engcranes.com