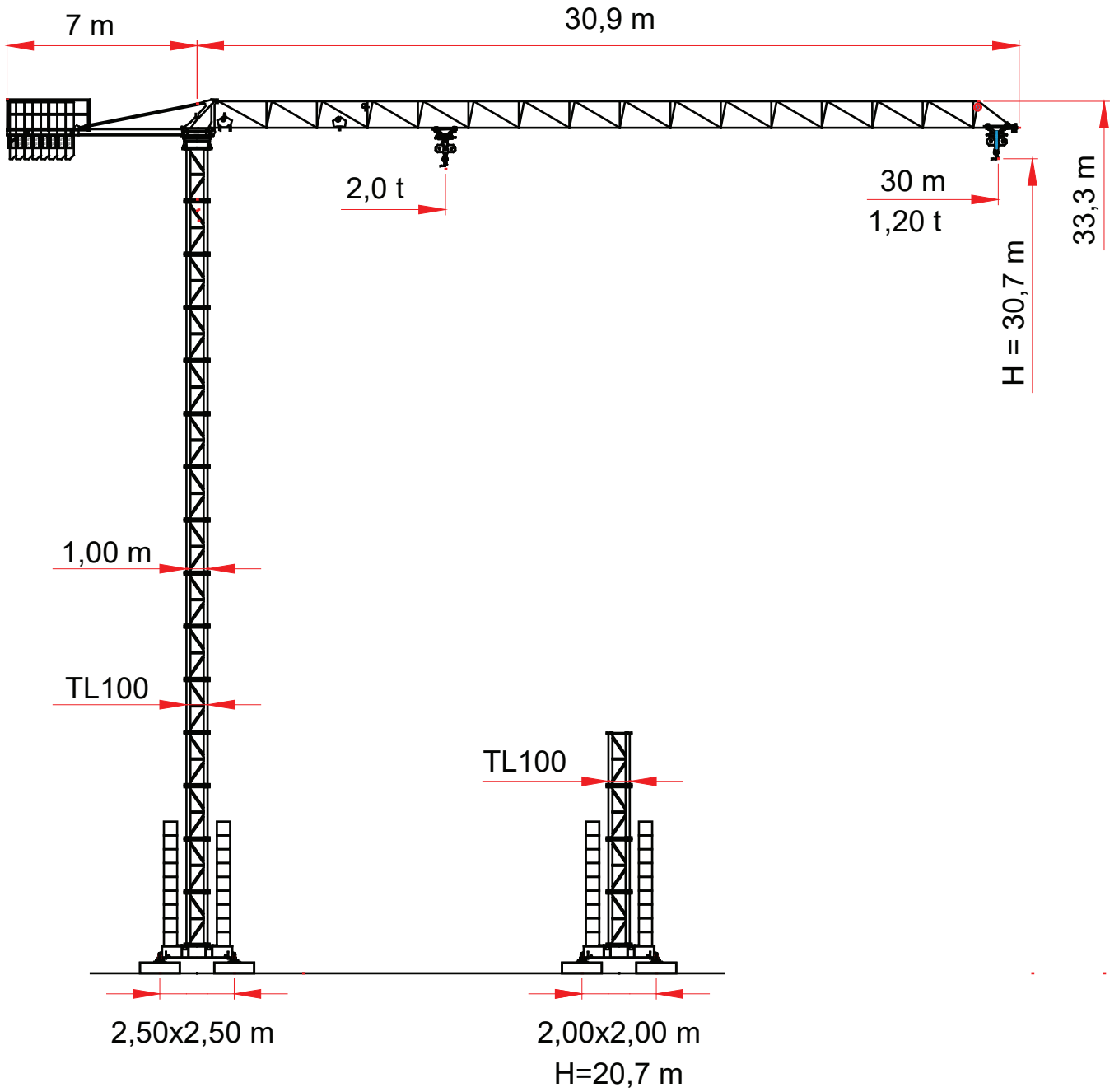
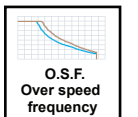
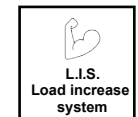
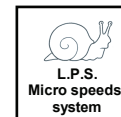
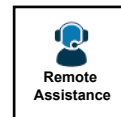


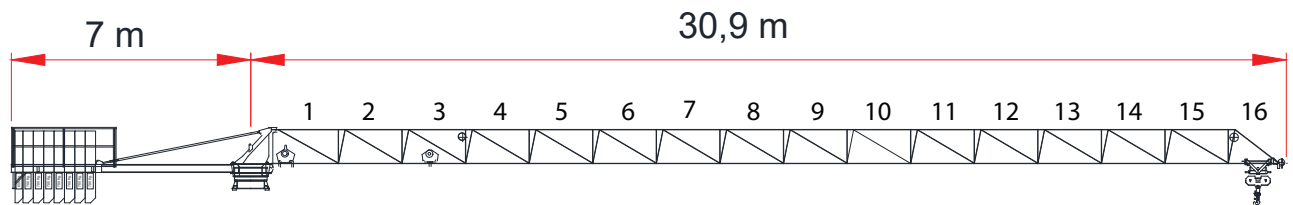
EDT 35
Gru per Centri Storici



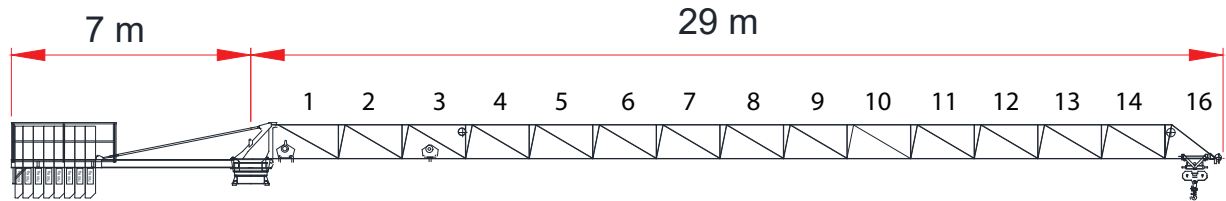
OGNI PARTE DELLA GRU NON SUPERA
1000 kg DI PESO E 2 m DI DIMENSIONE MASSIMA

EVERY PART OF THE CRANE DOES NOT EXCEED
1000 kg OF WEIGHT AND 2 m OF MAXIMUM DIMENSION

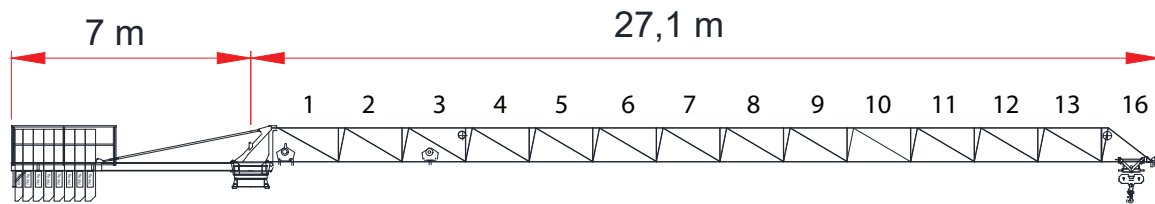




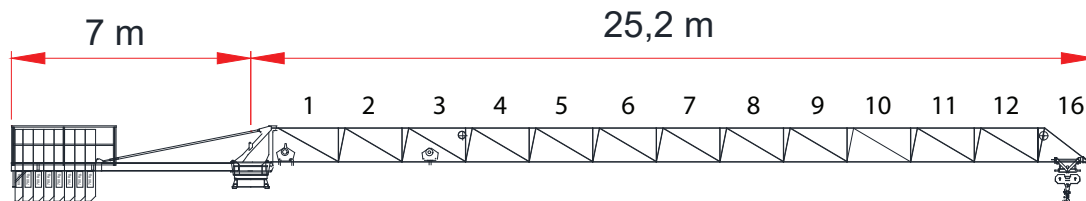
		JIB (m)		11	13	15	16,5	18,5	20,5	22,5	24	26	28	30
2 t	→ STD (m)	17,9	STD (t)	2,00	2,00	2,00	2,00	1,92	1,71	1,54	1,43	1,30	1,19	1,10
	→ L.I.S. (m)	19,2	L.I.S. (t)	2,00	2,00	2,00	2,00	2,00	1,86	1,67	1,55	1,42	1,30	1,20



		JIB (m)		11	13	15	16,5	18,5	20,5	22,5	24	26	28
2 t	→ STD (m)	17,9	STD (t)	2,00	2,00	2,00	2,00	1,93	1,72	1,55	1,44	1,31	1,20
	→ L.I.S. (m)	19,2	L.I.S. (t)	2,00	2,00	2,00	2,00	2,00	1,86	1,67	1,55	1,42	1,30

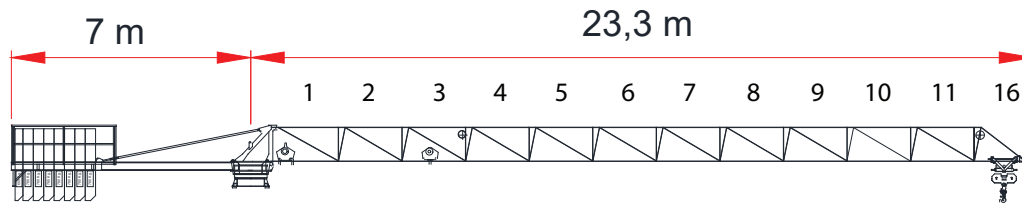


		JIB (m)		11	13	15	16,5	18,5	20,5	22,5	24	26
2 t	→ STD (m)	17,8	STD (t)	2,00	2,00	2,00	2,00	1,92	1,71	1,54	1,43	1,30
	→ L.I.S. (m)	19,0	L.I.S. (t)	2,00	2,00	2,00	2,00	2,00	1,84	1,65	1,53	1,40

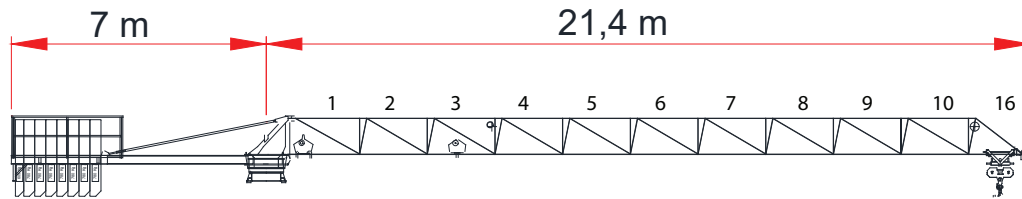


		JIB (m)		11	13	15	16,5	18,5	20,5	22,5	24
2 t	→ STD (m)	18,1	STD (t)	2,00	2,00	2,00	2,00	1,95	1,74	1,56	1,45
	→ L.I.S. (m)	19,2	L.I.S. (t)	2,00	2,00	2,00	2,00	2,00	1,85	1,67	1,55

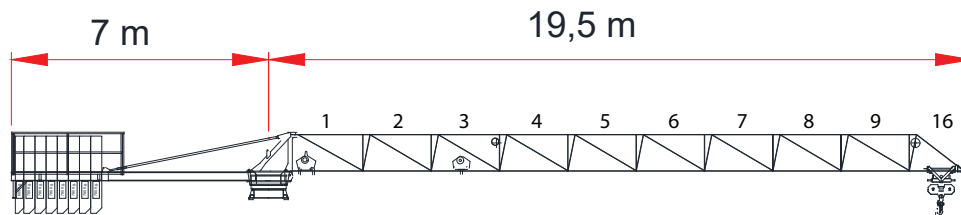
L.I.S. = Load Increase System
 All intermediate loads can be increased till a maximum of 10% if the crane is equipped with L.I.S.
 Con il sistema L.I.S. tutte le portate intermedie possono essere aumentate fino ad un massimo del 10%



2 t		JIB (m)		11	13	15	16,5	18,5	20,5	22,5
→	STD (m)	18,5	STD (t)	2,00	2,00	2,00	2,00	2,00	1,78	1,60
→	L.I.S. (m)	19,0	L.I.S. (t)	2,00	2,00	2,00	2,00	2,00	1,83	1,65




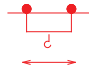

2 t		JIB (m)		11	13	15	16,5	18,5	20,5
→	STD (m)	18,7	STD (t)	2,00	2,00	2,00	2,00	2,00	1,80
→	L.I.S. (m)	19,1	L.I.S. (t)	2,00	2,00	2,00	2,00	2,00	1,85

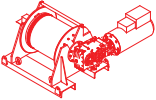



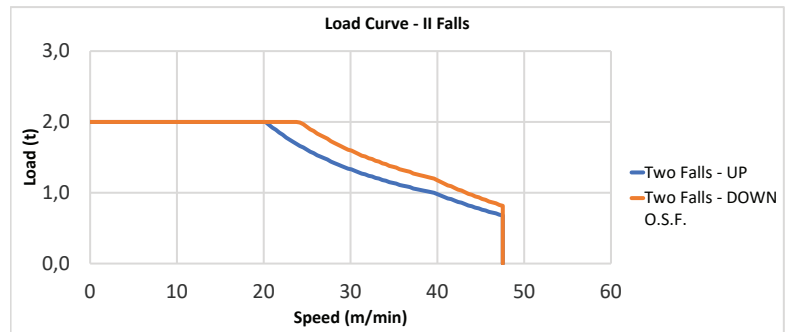
2 t		JIB (m)		11	13	15	16,5	18,5
→	STD (m)	18,5	STD (t)	2,00	2,00	2,00	2,00	2,00
→	L.I.S. (m)	18,5	L.I.S. (t)	2,00	2,00	2,00	2,00	2,00

Ulteriori versioni di braccio disponibili.
Further jib versions available.

L.I.S. = Load Increase System
 All intermediate loads can be increased till a maximum of 10% if the crane is equipped with L.I.S.
 Con il sistema L.I.S. tutte le portate intermedie possono essere aumentate fino ad un massimo del 10%

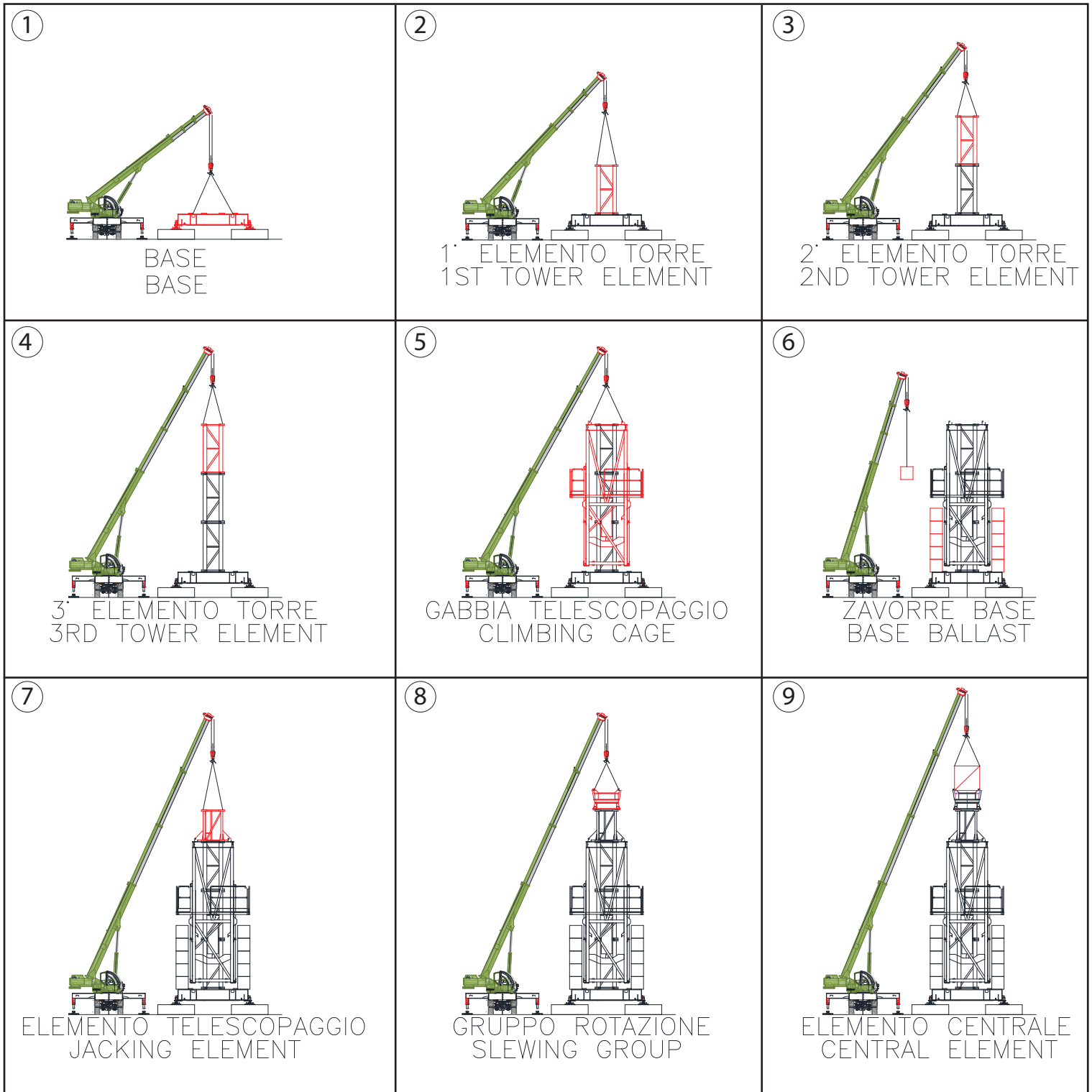
		Speed - Velocità	Power - Potenza
Rotazione Slewing		0 → 0,70 r.p.m.	2,2 kW
Trolley Carrello		0 → 64 m/min	1,1 kW
Rail Traslazione		ON REQUEST	

Type Tipo 	Power - Potenza		Rope - Funne
	hp	kW	m
HWI0475120	10	7,5	120
Layer - Strati	N. 3		
Stepless - Reg. Continua 			
kg	m/min		
2000	0 → 23		
1200	0 → 40		



FORZA MOTRICE TOTALE TOTAL INSTALLED POWER	7,5 kW (10 hp)
	15 kVA - 400/480 V - 50/60 Hz ±5% ±2%

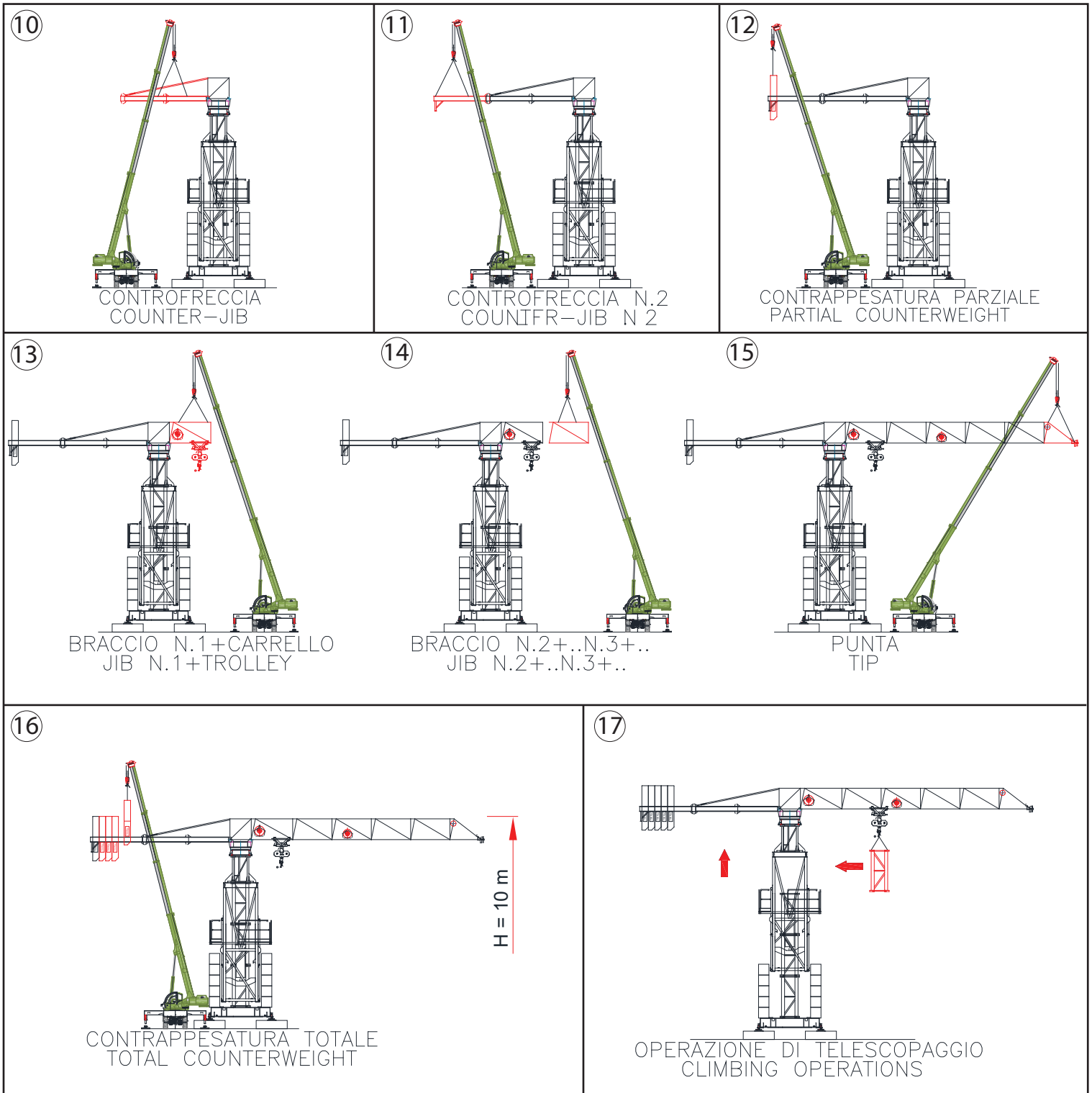
SEQUENZA DI MONTAGGIO - ERECTION SEQUENCE



OGNI PARTE DELLA GRU NON SUPERA
1000 kg DI PESO E 2 m DI DIMENSIONE MASSIMA

EVERY PART OF THE CRANE DOES NOT EXCEED
1000 kg OF WEIGHT AND 2 m OF MAXIMUM DIMENSION

SEQUENZA DI MONTAGGIO - ERECTION SEQUENCE

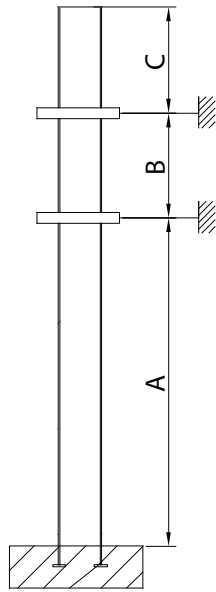


OGNI PARTE DELLA GRU NON SUPERA
1000 kg DI PESO E 2 m DI DIMENSIONE MASSIMA

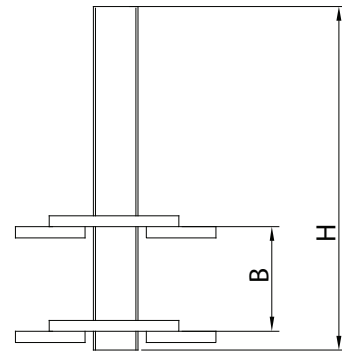
EVERY PART OF THE CRANE DOES NOT EXCEED
1000 kg OF WEIGHT AND 2 m OF MAXIMUM DIMENSION

Different heights and tower combinations are available; please consult our technical dept.

Altezze diverse e combinazioni di torre sono disponibili; contattare il nostro ufficio tecnico.



EXTERNAL CLIMBING



INTERNAL CLIMBING

ENG CRANES SRL

Via Limido 1/E
42024 Castelnovo di Sotto - RE Italy

Info + 39 0522 1495518

Fax + 39 0522 1495601

commerciale@engcranes.com

www.engcranes.com