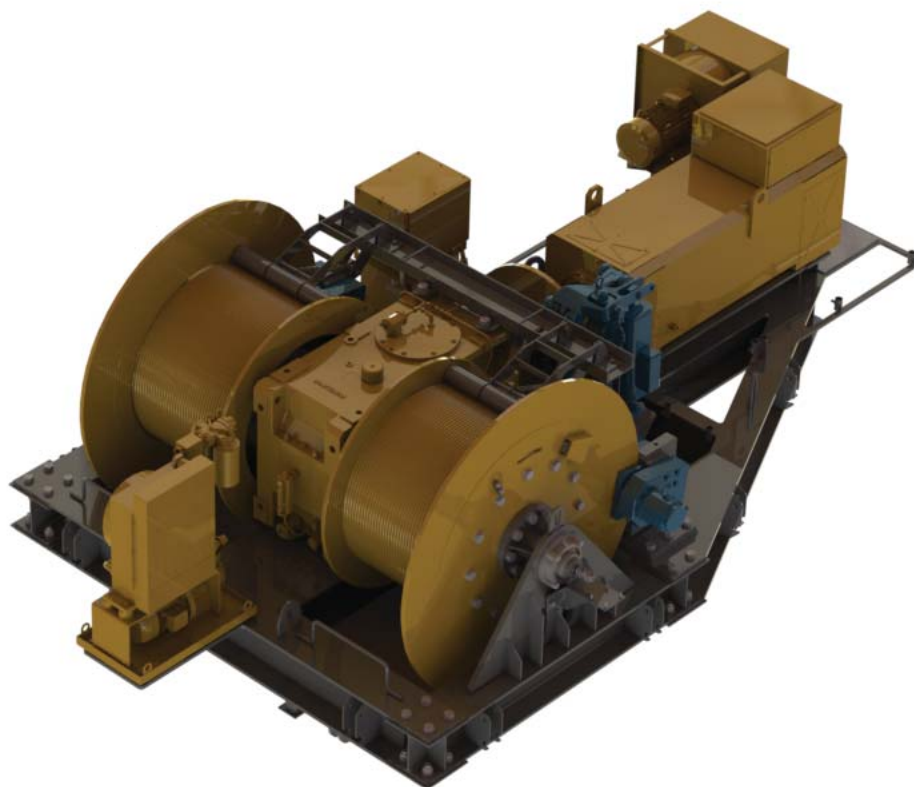


WINCHES

ENG
— CRANES —

ENG's range of winches 2020

Design, engineering, manufacture



TOWER CRANES AND BEYOND

UP TO 1300 kW OF POWER

Reliable, powerful yet safe, made in Italy with the best Italian/European components.

ENG CRANES is an Italian company with over 30 years of experience in the designing and manufacturing of tower cranes.

More than 10 years ago passion and the idea of creating their own range of hoisting winches brought their technical team to develop a range of winches up to 1300 kW which can be applied to any machinery.

And it wouldn't be ENG CRANES if we were to do it just for ourselves which has led us to develop winches also on our customer's request.

As for all of our products our range of winches meet the CEE and standards.

Our Tech Dept is at your complete disposal to develop completely customized solution, suitable for every sector:

Pipeline
Harbour Cranes
Tower Cranes
Luffer Cranes
Derrick Cranes
Off Shore
Recovery
Renewable Energies

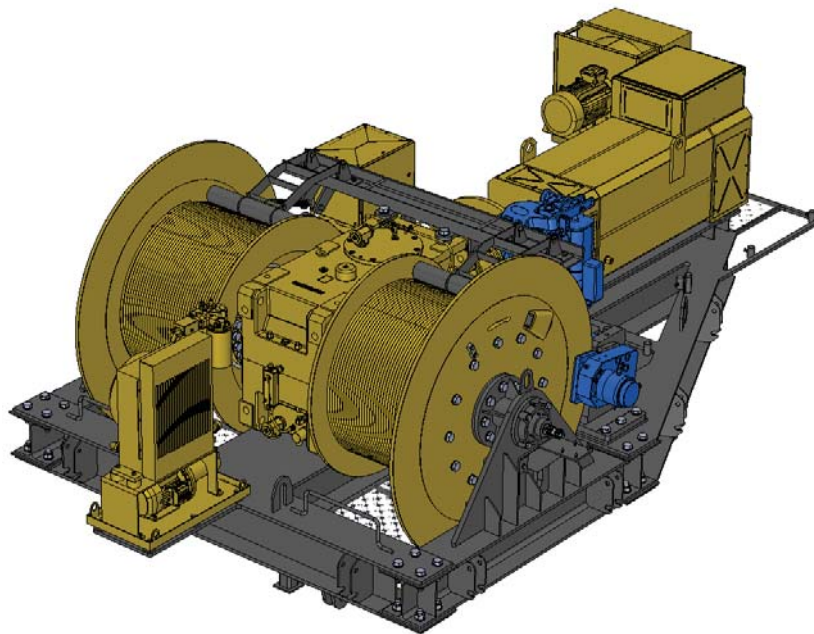
All our winches can be customized in order to satisfy your need:

Smooth or Grooved drum
Different drum length
Motorized drum w/o structure
Hydraulic motor with hydraulic negative brake

RANGE 2020



MODEL HW401300BO-111037						
ROPE SIZE Ø			18	mm	0,71	in
ROPE LAYER	PULL ON THE ROPE		ROPE SPEED		ROPE CAPACITY	
N.	t	USt	m/min	fpm	m	ft
1	6,03	6,65	633,30	2077,77	122,79	402,85
2	5,83	6,42	655,76	2151,45	127,14	417,14
3	5,63	6,21	678,22	2225,13	131,50	431,42
4	5,45	6,01	700,68	2298,81	135,85	445,71
5	5,28	5,82	723,14	2372,49	140,21	460,00
6	5,12	5,65	745,59	2446,17	144,56	474,28

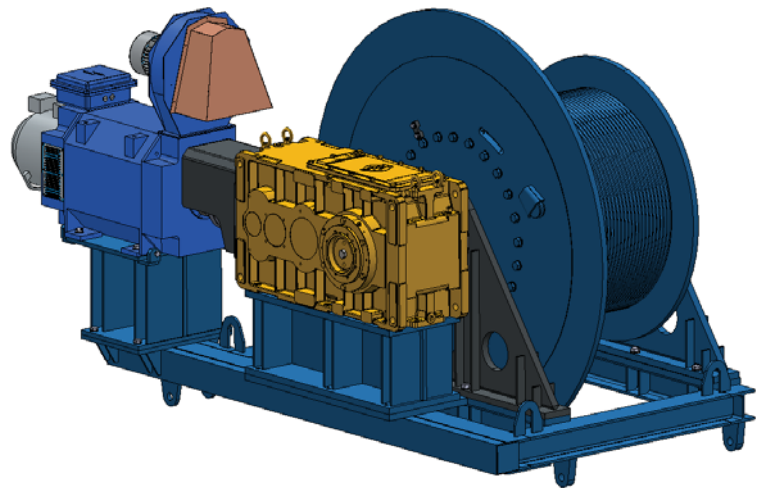


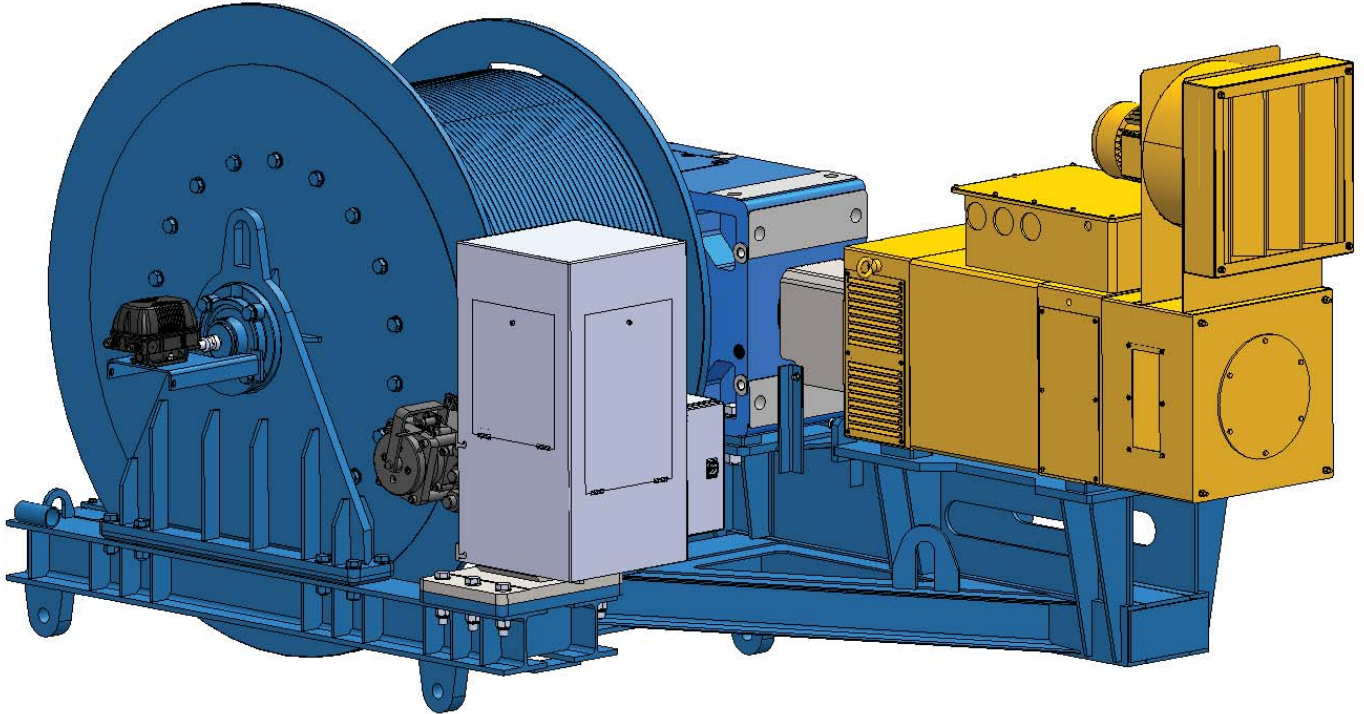


MODEL HW201101100						
ROPE SIZE Ø			18 mm	0,71 in		
ROPE LAYER	PULL ON THE ROPE		ROPE SPEED		ROPE CAPACITY	
N.	t	USt	m/min	fpm	m	ft
1	7,85	8,66	83,92	275,33	83,92	275,33
2	7,58	8,36	86,90	285,09	146,96	482,15
3	7,33	8,08	89,87	294,85	151,99	498,66
4	7,10	7,82	92,85	304,62	157,02	515,17
5	6,88	7,58	95,82	314,38	162,06	531,68
6	6,67	7,35	98,80	324,14	167,09	548,20
7	6,47	7,14	101,77	333,91	172,12	564,71

MODEL HW251101010						
ROPE SIZE Ø			20 mm	0,79 in		
ROPE LAYER	PULL ON THE ROPE		ROPE SPEED		ROPE CAPACITY	
N.	t	USt	m/min	fpm	m	ft
1	9,63	10,61	65,81	215,91	65,81	215,91
2	9,26	10,21	68,40	224,42	134,26	440,48
3	8,92	9,84	70,99	232,92	139,35	457,18
4	8,61	9,49	73,59	241,43	144,44	473,87
5	8,32	9,17	76,18	249,94	149,53	490,57
6	8,04	8,87	78,77	258,44	154,62	507,27
7	7,79	8,58	81,37	266,95	159,70	523,97

MODEL HW40110BR-75025BE						
ROPE SIZE Ø			26 mm	1,02 in		
ROPE LAYER	PULL ON THE ROPE		ROPE SPEED		ROPE CAPACITY	
N.	t	USt	m/min	fpm	m	ft
1	17,21	18,97	38,29	125,64	84,49	277,21
2	16,37	18,04	40,26	132,07	88,82	291,41
3	15,61	17,21	42,22	138,51	93,15	305,61
4	14,92	16,44	44,18	144,95	97,48	319,82
5	14,28	15,74	46,14	151,38	101,81	334,02
6	13,70	15,10	48,10	157,82	106,14	348,22
7	13,16	14,51	50,07	164,26	110,47	362,43





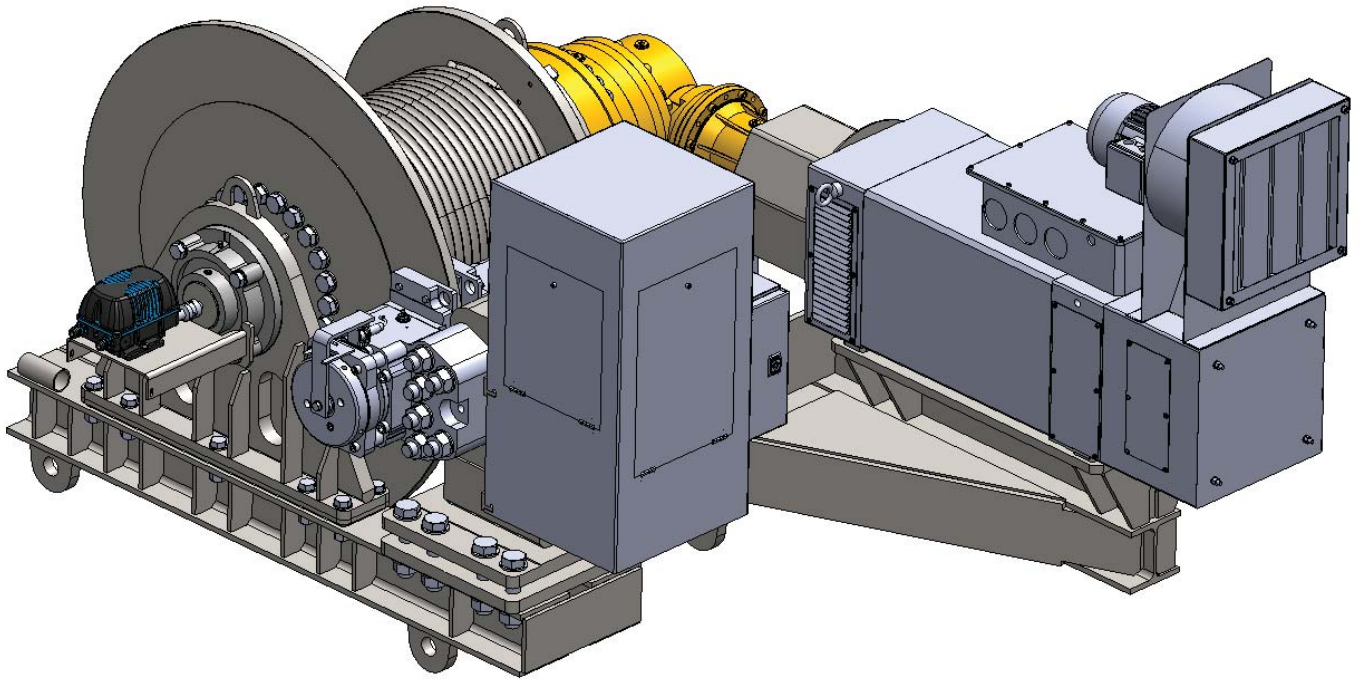
65 kW

MODEL HW2065560							
ROPE SIZE Ø			18 mm		0,71 in		
ROPE LAYER		PULL ON THE ROPE		ROPE SPEED		ROPE CAPACITY	
N.	t	USt	m/min	fpm	m	ft	
1	8,07	8,90	46,39	152,20	81,40	267,05	
2	7,58	8,36	49,39	162,04	86,66	284,31	
3	7,15	7,88	52,39	171,87	91,92	301,56	
4	6,76	7,45	55,38	181,70	97,18	318,82	
5	6,41	7,07	58,38	191,54	102,43	336,07	
6	6,10	6,72	61,38	201,37	107,69	353,32	

MODEL HW2565520							
ROPE SIZE Ø			20 mm		0,79 in		
ROPE LAYER		PULL ON THE ROPE		ROPE SPEED		ROPE CAPACITY	
N.	t	USt	m/min	fpm	m	ft	
1	10,27	11,32	36,47	119,65	74,40	244,08	
2	9,58	10,56	39,09	128,24	79,74	261,60	
3	8,98	9,90	41,70	136,83	85,08	279,13	
4	8,45	9,31	44,32	145,42	90,42	296,65	
5	7,98	8,79	46,94	154,00	95,76	314,17	
6	7,55	8,33	49,56	162,59	101,10	331,69	

80 kW

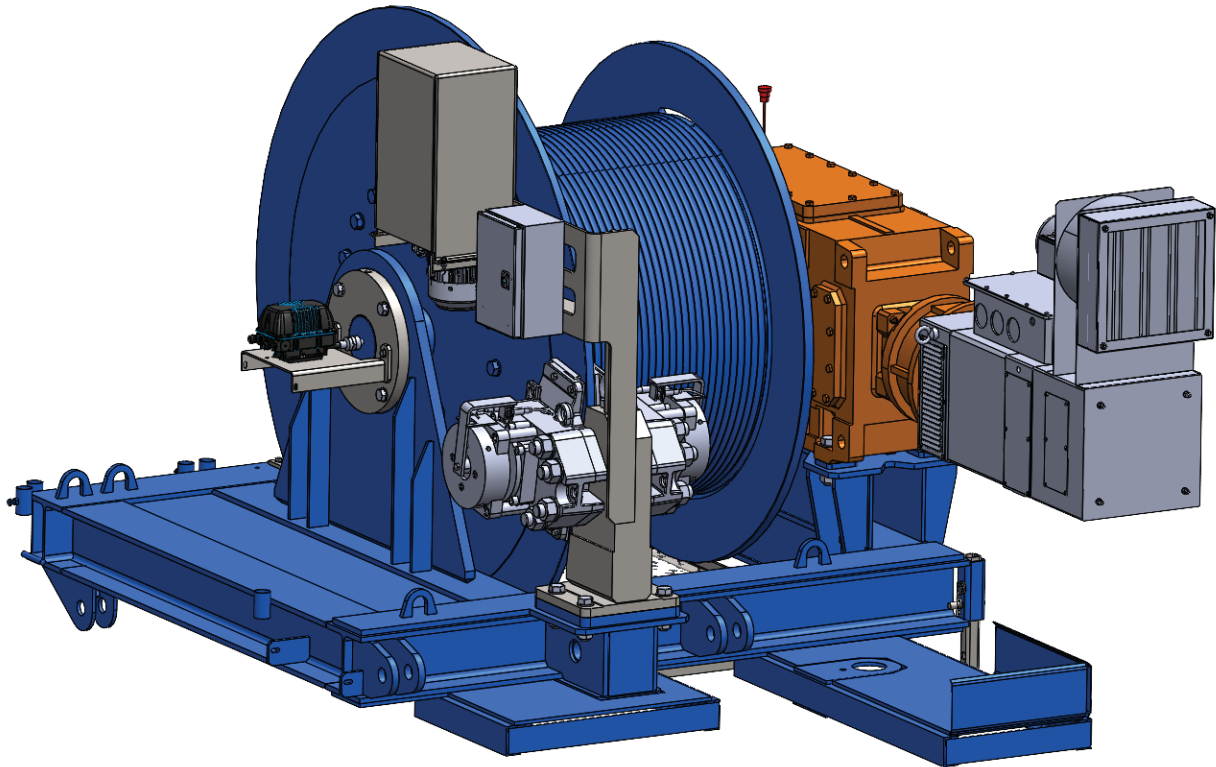
MODEL HW1680916							
ROPE SIZE Ø			16 mm		0,63 in		
ROPE LAYER		PULL ON THE ROPE		ROPE SPEED		ROPE CAPACITY	
N.	t	USt	m/min	fpm	m	ft	
1	5,37	5,92	84,89	278,50	141,94	465,68	
2	5,21	5,74	87,56	287,28	146,41	480,36	
3	5,06	5,57	90,24	296,05	150,89	495,04	
4	4,91	5,41	92,91	304,83	155,36	509,71	
5	4,77	5,26	95,59	313,61	159,83	524,39	
6	4,64	5,12	98,26	322,39	164,31	539,07	



MODEL HW1455916						
ROPE SIZE Ø		16 mm		0,63 in		
ROPE LAYER	PULL ON THE ROPE		ROPE SPEED		ROPE CAPACITY	
N.	t	USt	m/min	fpm	m	ft
1	4,91	5,41	63,79	209,30	141,94	465,68
2	4,76	5,25	65,80	215,89	146,41	480,36
3	4,62	5,09	67,81	222,49	150,89	495,04
4	4,49	4,95	69,83	229,08	155,36	509,71
5	4,36	4,81	71,84	235,68	159,83	524,39
6	4,24	4,68	73,85	242,28	164,31	539,07

MODEL HW1655916						
ROPE SIZE Ø		16 mm		0,63 in		
ROPE LAYER	PULL ON THE ROPE		ROPE SPEED		ROPE CAPACITY	
N.	t	USt	m/min	fpm	m	ft
1	5,61	6,18	55,90	183,40	141,94	465,68
2	5,43	5,99	57,66	189,18	146,41	480,36
3	5,27	5,81	59,43	194,96	150,89	495,04
4	5,12	5,65	61,19	200,74	155,36	509,71
5	4,98	5,49	62,95	206,52	159,83	524,39
6	4,84	5,34	64,71	212,31	164,31	539,07

MODEL HW30551040						
ROPE SIZE Ø		22 mm		0,87 in		
ROPE LAYER	PULL ON THE ROPE		ROPE SPEED		ROPE CAPACITY	
N.	t	USt	m/min	fpm	m	ft
1	11,82	13,03	27,58	90,49	113,21	371,43
2	11,33	12,49	28,78	94,42	118,12	387,53
3	10,88	11,99	29,97	98,34	123,02	403,63
4	10,46	11,53	31,17	102,26	127,93	419,72
5	10,07	11,10	32,36	106,18	132,84	435,82
6	9,71	10,71	33,56	110,11	137,75	451,92
7	9,38	10,34	34,76	114,03	142,65	468,02
8	9,07	10,00	35,95	117,95	147,56	484,12



MODEL HW1242908						
ROPE SIZE Ø			14	mm	0,55	in
ROPE LAYER		PULL ON THE ROPE		ROPE SPEED		ROPE CAPACITY
N.	t	USt	m/min	fpm	m	ft
1	4,49	4,95	61,40	201,44	141,95	465,73
2	4,37	4,82	63,09	206,99	145,87	478,57
3	4,25	4,69	64,79	212,55	149,78	491,41
4	4,15	4,57	66,48	218,10	153,70	504,26
5	4,04	4,46	68,17	223,66	157,61	517,10
6	3,94	4,35	69,86	229,21	161,53	529,94

MODEL HW1442544						
ROPE SIZE Ø			16	mm	0,63	in
ROPE LAYER		PULL ON THE ROPE		ROPE SPEED		ROPE CAPACITY
N.	t	USt	m/min	fpm	m	ft
1	5,00	5,51	46,43	152,32	82,51	270,71
2	4,80	5,29	48,38	158,72	85,98	282,09
3	4,61	5,09	50,33	165,12	89,45	293,47
4	4,44	4,90	52,28	171,53	92,92	304,85
5	4,28	4,72	54,23	177,93	96,39	316,23
6	4,13	4,56	56,18	184,33	99,86	327,61

MODEL HW1642544						
ROPE SIZE Ø			16	mm	0,63	in
ROPE LAYER		PULL ON THE ROPE		ROPE SPEED		ROPE CAPACITY
N.	t	USt	m/min	fpm	m	ft
1	5,71	6,29	41,92	137,52	82,51	270,71
2	5,48	6,04	43,68	143,30	85,98	282,09
3	5,27	5,80	45,44	149,08	89,45	293,47
4	5,07	5,59	47,20	154,86	92,92	304,85
5	4,89	5,39	48,96	160,64	96,39	316,23
6	4,72	5,20	50,73	166,42	99,86	327,61

MODEL HW18421025						
ROPE SIZE Ø			18	mm	0,71	in
ROPE LAYER		PULL ON THE ROPE		ROPE SPEED		ROPE CAPACITY
N.	t	USt	m/min	fpm	m	ft
1	6,37	7,02	36,84	120,88	132,36	434,24
2	6,15	6,78	38,15	125,16	137,05	449,64
3	5,95	6,56	39,46	129,45	141,74	465,04
4	5,76	6,35	40,76	133,74	146,44	480,44
5	5,58	6,15	42,07	138,02	151,13	495,84
6	5,41	5,96	43,38	142,31	155,83	511,24
7	5,25	5,79	44,68	146,59	160,52	526,64

MODEL HW25421030						
ROPE SIZE Ø			20	mm	0,79	in
ROPE LAYER		PULL ON THE ROPE		ROPE SPEED		ROPE CAPACITY
N.	t	USt	m/min	fpm	m	ft
1	9,34	10,30	25,88	84,91	113,22	371,46
2	8,99	9,91	26,90	88,25	117,68	386,10
3	8,66	9,55	27,92	91,60	122,14	400,73
4	8,36	9,21	28,94	94,95	126,60	415,37
5	8,07	8,90	29,96	98,29	131,07	430,01
6	7,81	8,60	30,98	101,64	135,53	444,64
7	7,56	8,33	32,00	104,98	139,99	459,28
8	7,32	8,07	33,02	108,33	144,45	473,91

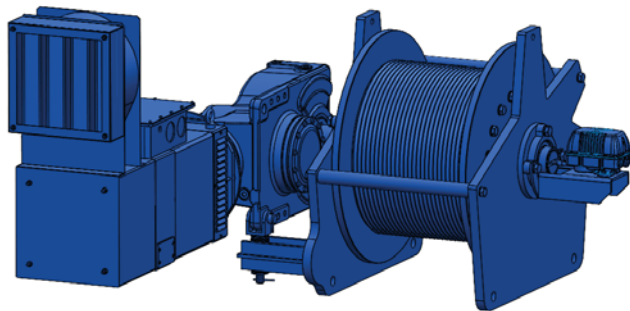


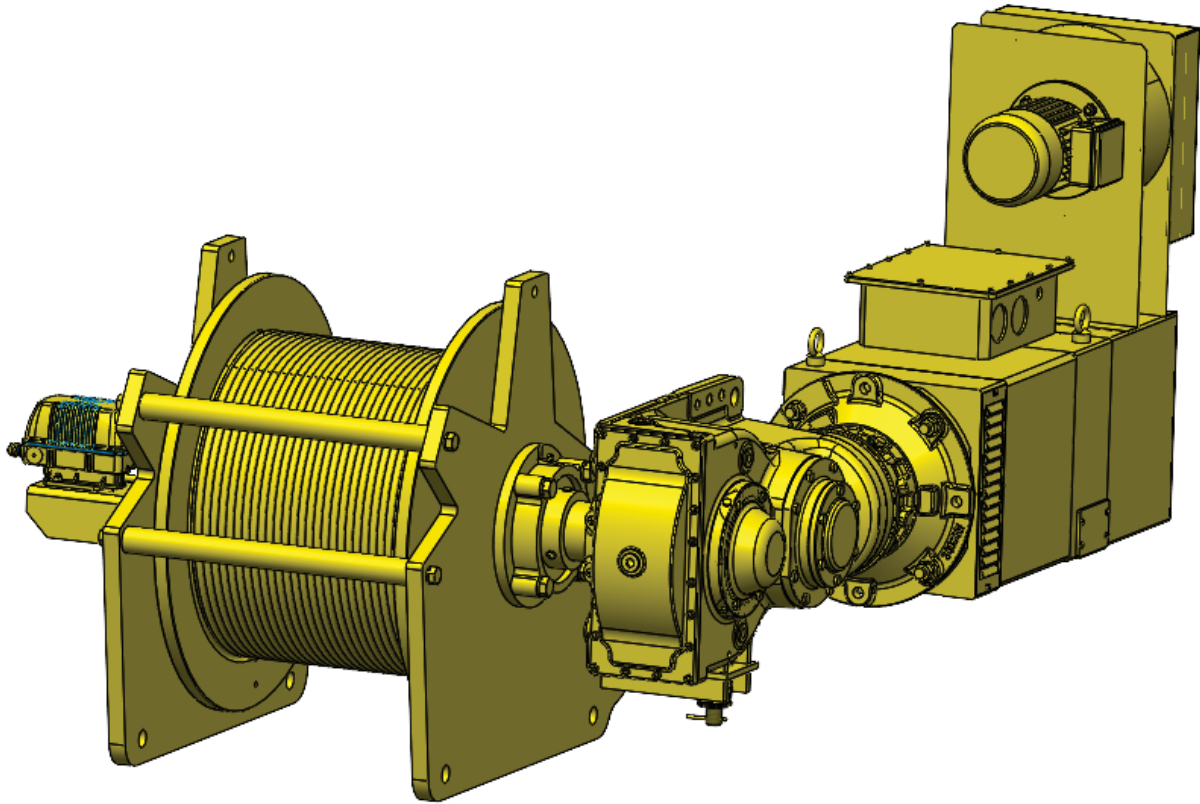
MODEL HW1037336						
ROPE SIZE Ø		14 mm		0,55 in		
ROPE LAYER	PULL ON THE ROPE		ROPE SPEED		ROPE CAPACITY	
N.	t	USt	m/min	fpm	m	ft
1	4,27	4,71	59,58	195,46	49,91	163,74
2	4,06	4,48	62,57	205,28	52,41	171,96
3	3,88	4,28	65,56	215,10	54,92	180,19
4	3,71	4,09	68,55	224,91	57,43	188,41
5	3,55	3,92	71,55	234,73	59,93	196,64
6	3,41	3,76	74,54	244,55	62,44	204,86

MODEL HW1037540						
ROPE SIZE Ø		14 mm		0,55 in		
ROPE LAYER	PULL ON THE ROPE		ROPE SPEED		ROPE CAPACITY	
N.	t	USt	m/min	fpm	m	ft
1	3,54	3,91	61,36	201,33	82,52	270,75
2	3,42	3,77	63,62	208,73	85,56	280,71
3	3,30	3,64	65,88	216,13	88,59	290,66
4	3,19	3,52	68,13	223,54	91,63	300,62
5	3,09	3,40	70,39	230,94	94,66	310,58
6	2,99	3,30	72,65	238,35	97,70	320,53

MODEL HW0837580						
ROPE SIZE Ø		12 mm		0,47 in		
ROPE LAYER	PULL ON THE ROPE		ROPE SPEED		ROPE CAPACITY	
N.	t	USt	m/min	fpm	m	ft
1	2,76	3,04	80,42	263,85	90,84	298,02
2	2,68	2,96	82,66	271,19	93,36	306,30
3	2,61	2,88	84,90	278,53	95,89	314,59
4	2,54	2,81	87,13	285,86	98,41	322,88
5	2,48	2,73	89,37	293,20	100,94	331,16
6	2,42	2,67	91,60	300,54	103,46	339,45

MODEL HW1237336						
ROPE SIZE Ø		14 mm		0,55 in		
ROPE LAYER	PULL ON THE ROPE		ROPE SPEED		ROPE CAPACITY	
N.	t	USt	m/min	fpm	m	ft
1	4,38	4,83	50,41	165,39	49,91	163,74
2	4,17	4,60	52,94	173,70	52,41	171,96
3	3,98	4,39	55,47	182,00	54,92	180,19
4	3,81	4,20	58,01	190,31	57,43	188,41
5	3,65	4,02	60,54	198,62	59,93	196,64
6	3,50	3,86	63,07	206,93	62,44	204,86





MODEL HW0822344						
ROPE SIZE ϕ		12 mm		0,47 in		
ROPE LAYER	PULL ON THE ROPE	ROPE SPEED		ROPE CAPACITY		
N.	t USt	m/min	fpm	m	ft	
1	3,23 3,56	43,59	143,01	51,82	170,00	
2	3,08 3,40	45,65	149,77	54,27	178,04	
3	2,95 3,25	47,71	156,54	56,72	186,08	
4	2,83 3,12	49,77	163,30	59,17	194,12	
5	2,71 2,99	51,84	170,06	61,62	202,16	
6	2,61 2,88	53,90	176,83	64,07	210,20	

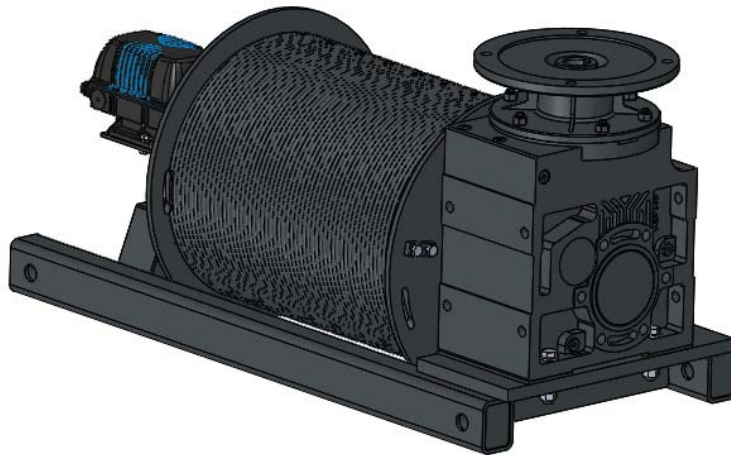
MODEL HW0415370						
ROPE SIZE ϕ		10 mm		0,39 in		
ROPE LAYER	PULL ON THE ROPE	ROPE SPEED		ROPE CAPACITY		
N.	t USt	m/min	fpm	m	ft	
1	1,44 1,59	59,88	196,45	55,48	182,03	
2	1,37 1,52	62,83	206,13	58,22	191,00	
3	1,31 1,45	65,78	215,81	60,95	199,97	
4	1,26 1,39	68,73	225,48	63,68	208,93	
5	1,21 1,33	71,68	235,16	66,42	217,90	
6	1,16 1,28	74,63	244,84	69,15	226,87	

WINCH 7.5 kW



TROLLEY WINCH MODEL AC.021080_16				
POWER	MOTOR 7,5 kW			
ROPE SIZE (mm)	∅ mm	16	∅ in	0,63
LINE PULL ON THE ROPE	t	0,98	USt	1,08
ROPE SPEED	m/min	44,56	fpm	146,19
ROPE CAPACITY	m	84,06	ft	275,78

WINCH 5.5 kW

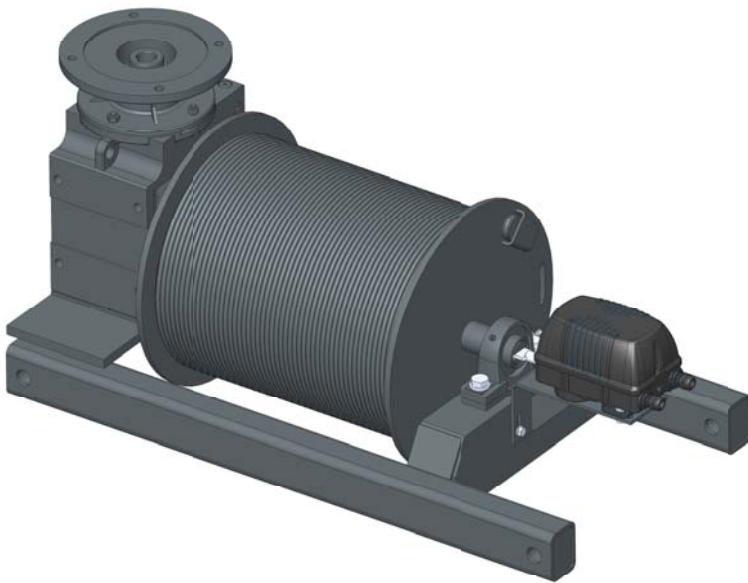


TROLLEY WINCH MODEL AC.020875_12				
POWER	MOTOR 7,5 kW			
ROPE SIZE (mm)	∅ mm	14	∅ in	0,55
LINE PULL ON THE ROPE	t	0,76	USt	0,84
ROPE SPEED	m/min	45,01	fpm	147,67
ROPE CAPACITY	m	75,18	ft	246,65

WINCH 4 kW

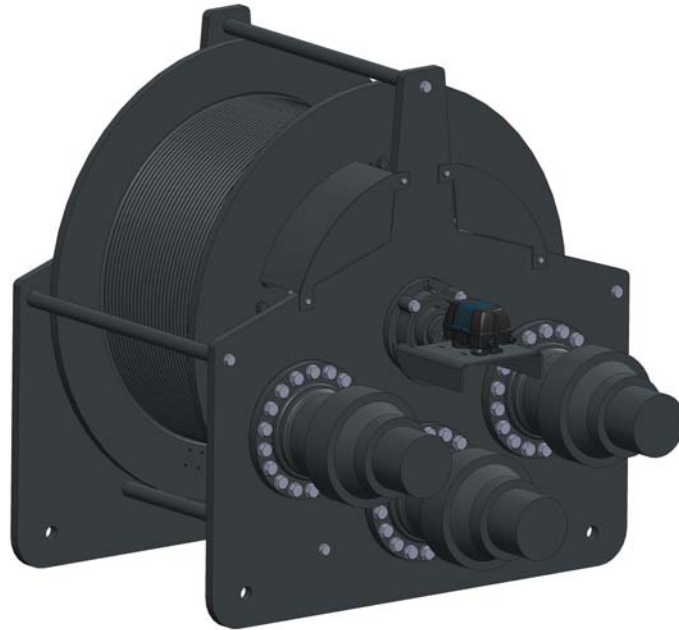


TROLLEY WINCH MODEL AC.020860_10				
POWER	MOTOR 7,5 kW			
ROPE SIZE (mm)	∅ mm	14	∅ in	0,55
LINE PULL ON THE ROPE	t	0,55	USt	0,61
ROPE SPEED	m/min	26,72	fpm	87,68
ROPE CAPACITY	m	59,89	ft	196,49



WINCH 3 kW

TROLLEY WINCH MODEL AC.020866_8				
POWER	MOTOR 7,5 kW			
ROPE SIZE (mm)	∅ mm	12	∅ in	0,47
LINE PULL ON THE ROPE	t	0,46	USt	0,51
ROPE SPEED	m/min	41,25	fpm	135,32
ROPE CAPACITY	m	66,88	ft	219,42



HYDRAULIC HOISTING WINCH MODEL EHHW16-3-60CC-200									
POWER	HYDRAULIC POWER PACK 133 kW								
ROPE SIZE	∅	16	mm						
ROPE LAYER	n	1	2	3	4	5	6	7	8
LINE PULL ON THE ROPE	kN	66,4	64,4	62,5	60,7	59	57,4	55,8	54,4
ROPE SPEED	m/min	83,7	86,4	89	91,6	94,3	96,9	99,6	102,2
ROPE CAPACITY	m	116,4	236,5	360,3	487,7	618,8	753,6	892	1034,1

A FEW APPLICATIONS

HOISTING WINCH 1300 kW



WINCH 110kW



WINCH 80 kW



WINCH 65 kW



WINCH 42kW



WINCH 37kW



APPLICATIONS

WINCH 15kW



WINCH 11kW



APPLICATIONS

WINCH 5,5kW



WINCH 4 kW

APPLICATIONS

ENG

CRANES

Design, engineering, manufacture

Edition 2020 - Rev 00

ENG CRANES WINCHES

ENG CRANES SRL

Via Limido 1/E
42024 Castelnovo di Sotto - RE
Italy

commerciale@engcranes.com

www.engcranes.com

[www.linkedin.com/company/
engcranes](http://www.linkedin.com/company/engcranes)

ENG CRANES USA INC

333 Bush Street, Suite 2020
San Francisco, CA 94104
USA

info@engcranesusa.com

www.engcranes-usa.com

[www.linkedin.com/company/
eng-cranes-usa](http://www.linkedin.com/company/eng-cranes-usa)

Specifications and data not binding subject to modification without notice.
Dati illustrativi non impegnativi con riserva di modifica senza preavviso.