

**ENG**  
— CRANES —

# ETL 303

## 20t

2021

3150

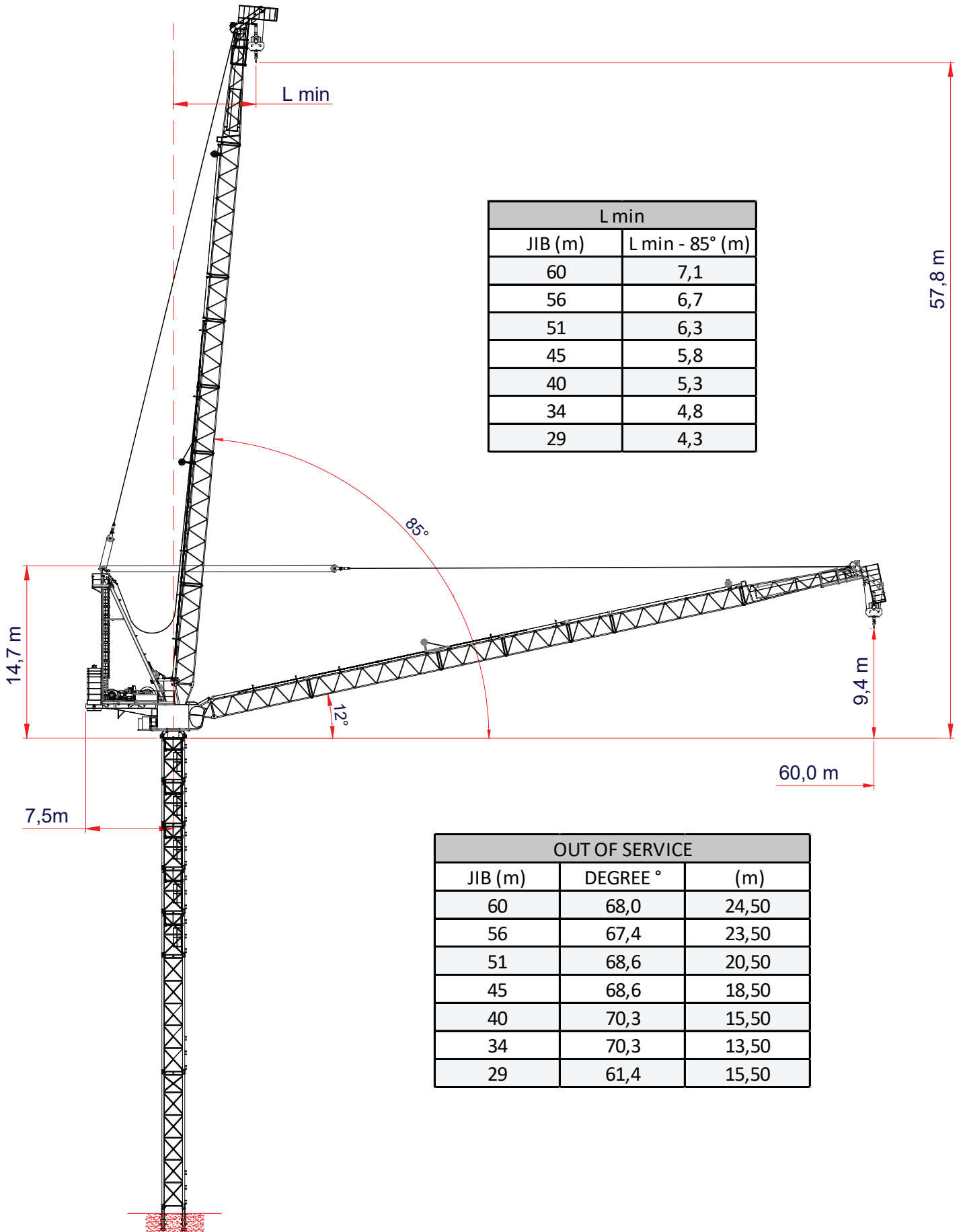
3150

3150

3150

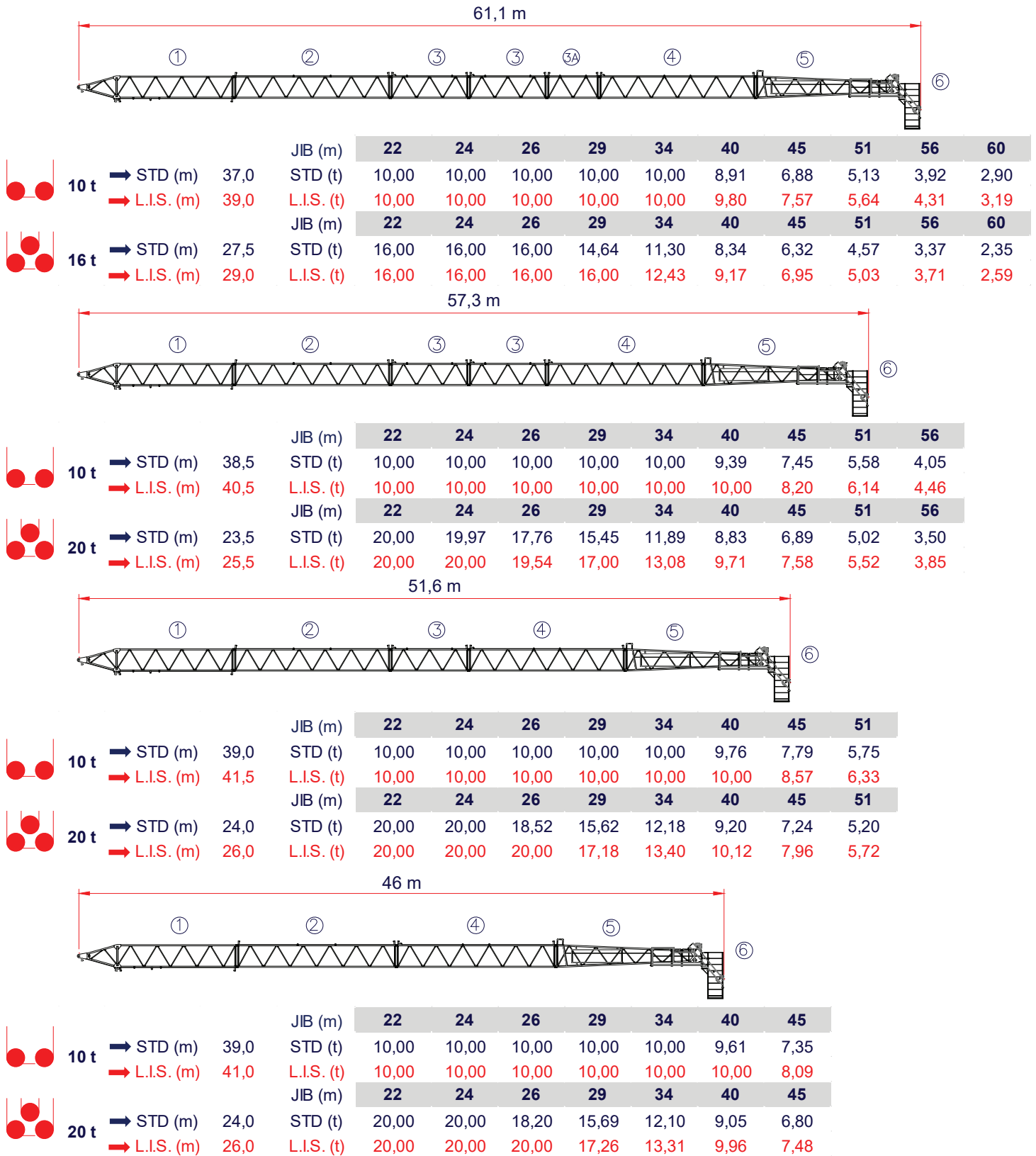
**ENG**  
CRANES

**CE** EN14439-C25  
FEM1.001-A4



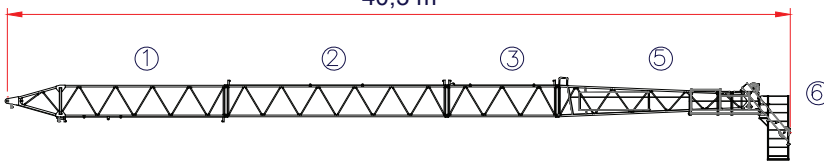
**ETL 303**

**LUFFER CRANE**



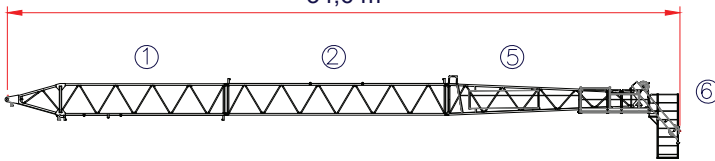
**L.I.S. = Load Increase System**  
 All intermediate loads can be increased till a maximum of 10% if the crane is equipped with L.I.S.  
 Con il sistema L.I.S. tutte le portate intermedie possono essere aumentate fino ad un massimo del 10%

40,3 m



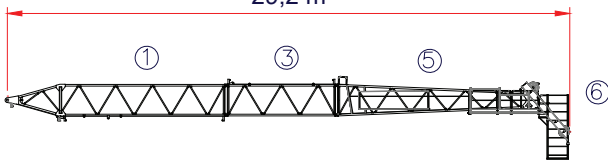
				JIB (m)					
				22	24	26	29	34	40
10 t	→ STD (m)	38,5	STD (t)	10,00	10,00	10,00	10,00	10,00	9,45
	→ L.I.S. (m)	40,0	L.I.S. (t)	10,00	10,00	10,00	10,00	10,00	10,00
20 t	→ STD (m)	24,5	STD (t)	20,00	20,00	18,24	15,75	12,32	8,90
	→ L.I.S. (m)	26,0	L.I.S. (t)	20,00	20,00	20,00	17,33	13,55	9,79

34,6 m



				JIB (m)				
				22	24	26	29	34
10 t	→ STD (m)	34,0	STD (t)	10,00	10,00	10,00	10,00	10,00
	→ L.I.S. (m)	34,0	L.I.S. (t)	10,00	10,00	10,00	10,00	10,00
20 t	→ STD (m)	23,5	STD (t)	20,00	19,93	18,04	15,35	11,20
	→ L.I.S. (m)	25,5	L.I.S. (t)	20,00	20,00	19,84	16,89	12,32

29,2 m


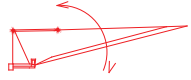



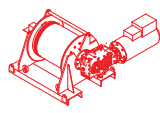




				JIB (m)			
				22	24	26	29
10 t	→ STD (m)	29,0	STD (t)	10,00	10,00	10,00	10,00
	→ L.I.S. (m)	29,0	L.I.S. (t)	10,00	10,00	10,00	10,00
20 t	→ STD (m)	23,5	STD (t)	20,00	19,55	17,34	14,30
	→ L.I.S. (m)	25,0	L.I.S. (t)	20,00	20,00	19,07	15,73

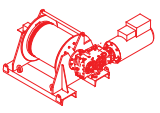




Lifting capacities valid up to 50 m hoisting height. Over 50 m hoisting height, the lifting capacity is reduced by additional rope weight.  
 Portate valide fino a 50 m di altezza di sollevamento. Oltre i 50 m si riduce la portata a causa del peso della fune.

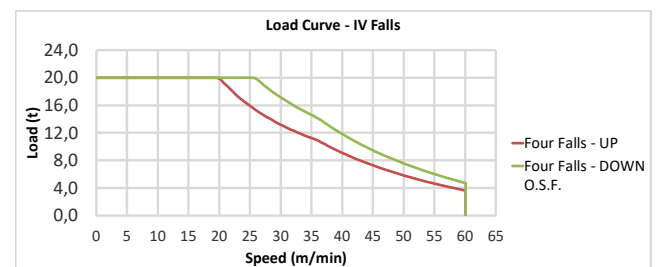
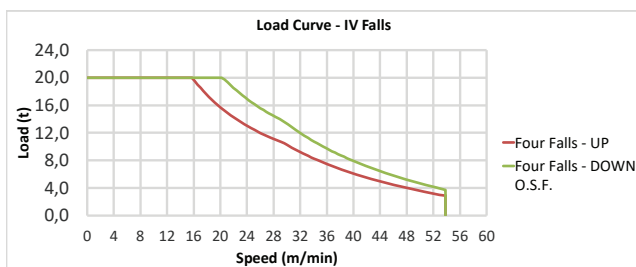
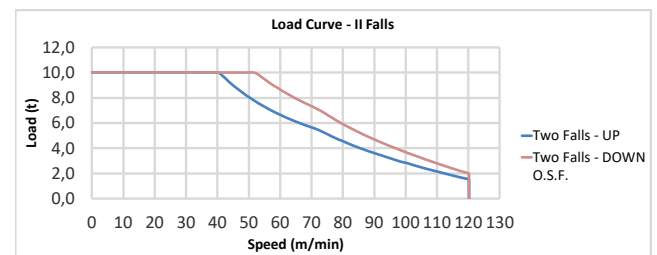
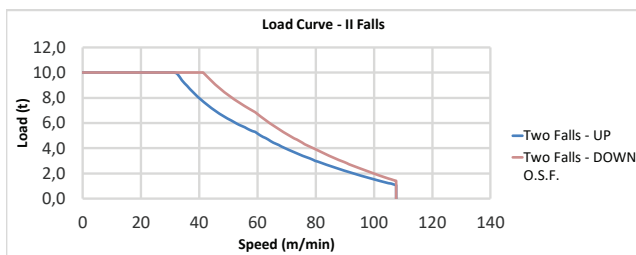
ETL 303

LOAD CHART

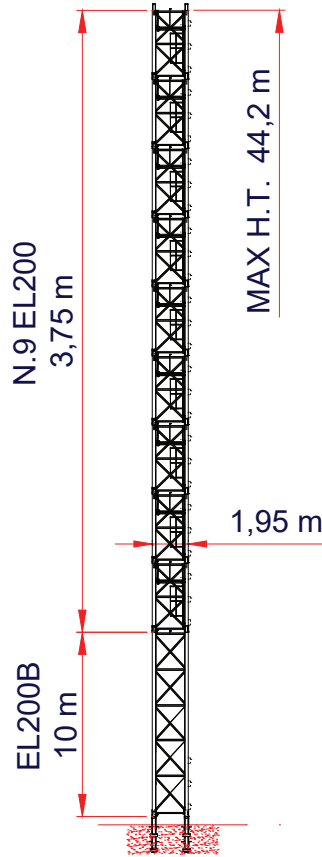
		Speed - Velocità	Power - Potenza
Rotazione Slewing		0 → 0,70 r.p.m.	2 x 7,5 kW
Luffing Impennamento		1,5 m/min	65 kW
Rail Traslazione		ON REQUEST	

Type Tipo 	Power - Potenza		Rope - Fune
	hp - CV PS - ch	kW	m
HW2065972	90	65	976
Layer - Strati	N. 7		
Stepless - Reg. Continua 			
kg	m/min		
10000	0 → 40		
1404	0 → 108		
Stepless - Reg. Continua 			
20000	0 → 20		
3705	0 → 54		
Maximum height - Massima altezza -	 483 m	 242 m	
Total installed power Forza motrice totale	65 kW (90 hp) 181 kVA - 400/480 V - 50/60 Hz ± 5%    ± 2%		

Type Tipo 	Power - Potenza		Rope - Fune
	hp - CV PS - ch	kW	m
HW2080972	109	80	976
Layer - Strati	N. 7		
Stepless - Reg. Continua 			
kg	m/min		
10000	0 → 51		
1664	0 → 120		
Stepless - Reg. Continua 			
20000	0 → 26		
4290	0 → 60		
Maximum height - Massima altezza -	 483 m	 242 m	
Total installed power Forza motrice totale	80 kW (109 hp) 200 kVA - 400/480 V - 50/60 Hz ± 5%    ± 2%		

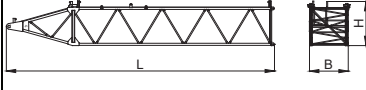
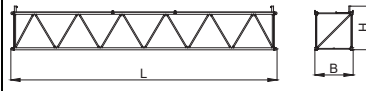
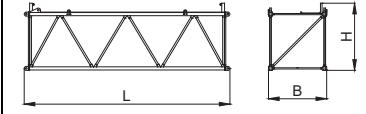
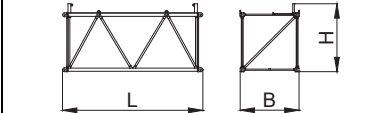
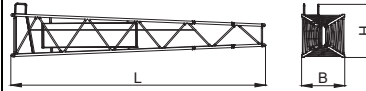
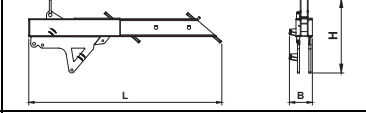
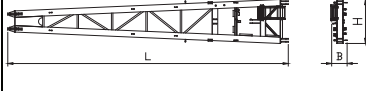
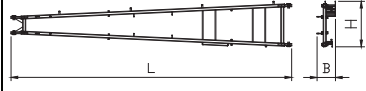



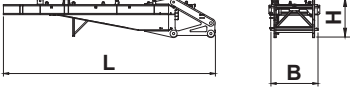
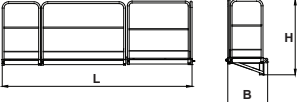
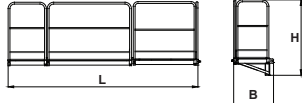
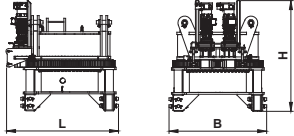
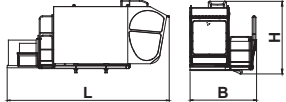
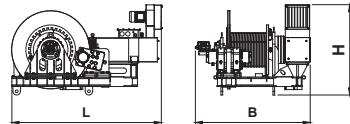
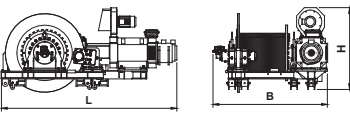
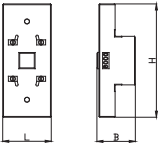
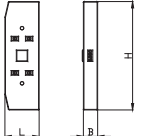
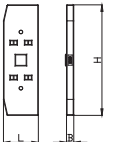
**O.S.F. = Over speed frequency**  
*All down speeds can be increased till a maximum of 30% if the crane is equipped with O.S.F.*



JIB (m)	H.T. (m)	H.U.H. (m)	
		12°	85°
29	44,20	46,90	70,00
34	40,45	44,35	71,85
40	36,70	41,80	73,80
45	36,70	43,00	79,40
51	36,70	44,20	85,10
56	32,95	41,55	86,95
60	32,95	42,35	90,75

*H.T. Height Tower*  
*H.U.H. Height Under Hook*

Q.ty Q.tà	Description Descrizione	Sketch Figura	Length Lunghezza [L]	Width Larghezza [B]	Height Altezza [H]	Single Weight Peso Unitario
Jib/Braccio			[m]	[m]	[m]	[t]
1	Jib section Elemento Braccio 1		11,43	1,80	1,88	1,85
2	Jib section Elemento Braccio 2 - 4		11,48	1,64	1,89	1,43
2	Jib section Elemento Braccio 3		5,80	1,65	1,89	0,77
1	Jib section Elemento Braccio 3A		3,80	1,65	1,89	0,54
1	Jib section Elemento Braccio 5		11,51	1,64	2,04	1,25
1	Tip Puntale		3,71	0,32	1,48	0,91
1	A-Frame inclined panel Pannello anteriore		11,42	0,68	1,79	3,02
1	A-Frame vertical panel Pannello posteriore		11,0	0,72	1,78	0,94
1	Tip Puntale		1,80	0,63	0,72	0,78

Q.ty Q.tà	Description Descrizione	Sketch Figura	Length Lunghezza [L]	Width Larghezza [B]	Height Altezza [H]	Single Weight Peso Unitario
Counter-jib/Controfreccia			[m]	[m]	[m]	[t]
1	Machinery deck Plancia macchinari		8,40	1,62	1,59	6,54
2	Balcony Ballatoio 1		2,82	0,62	1,53	0,13
2	Balcony Ballatoio 2		3,37	0,62	1,53	0,17
1	Slewing-group Gruppo Girevole		2,50	2,12	2,46	7,07
1	Cabin Platform Ballatoio Cabina		5,70	2,32	2,57	4,70
Winch / Argani			[m]	[m]	[m]	[t]
1	Luffing Winch Argano di Brandeggio		2,20	1,53	1,33	2,27
1	Hoisting Winch Argano Sollevamento		3,20	2,50	1,81	5,87
Counter-jib Ballast / Zavorra di Controfreccia			[m]	[m]	[m]	[t]
1	Counter-jib Ballast Zavorra di Controfreccia A6000		2,80	0,90	1,20	6,00
5	Counter-jib Ballast Zavorra di Controfreccia B6300		3,80	0,54	1,20	6,30
3	Counter-jib Ballast Zavorra di Controfreccia C3150		2,80	0,29	1,20	3,15





# ENG

---

## CRANES

Design, engineering, manufacture

### ENG CRANES SRL

Via Limido 1/E  
42024 Castelnovo di Sotto - RE  
Italy

Info + 39 0522 1495518

Fax + 39 0522 1495601

[commerciale@engcranes.com](mailto:commerciale@engcranes.com)

[www.engcranes.com](http://www.engcranes.com)